

**INSTRUMENT  
APPROACH  
CHART - ICAO**

**AERODROME ELEV 23 ft**  
HEIGHTS RELATED TO  
THR RWY 15L - ELEV 23 ft

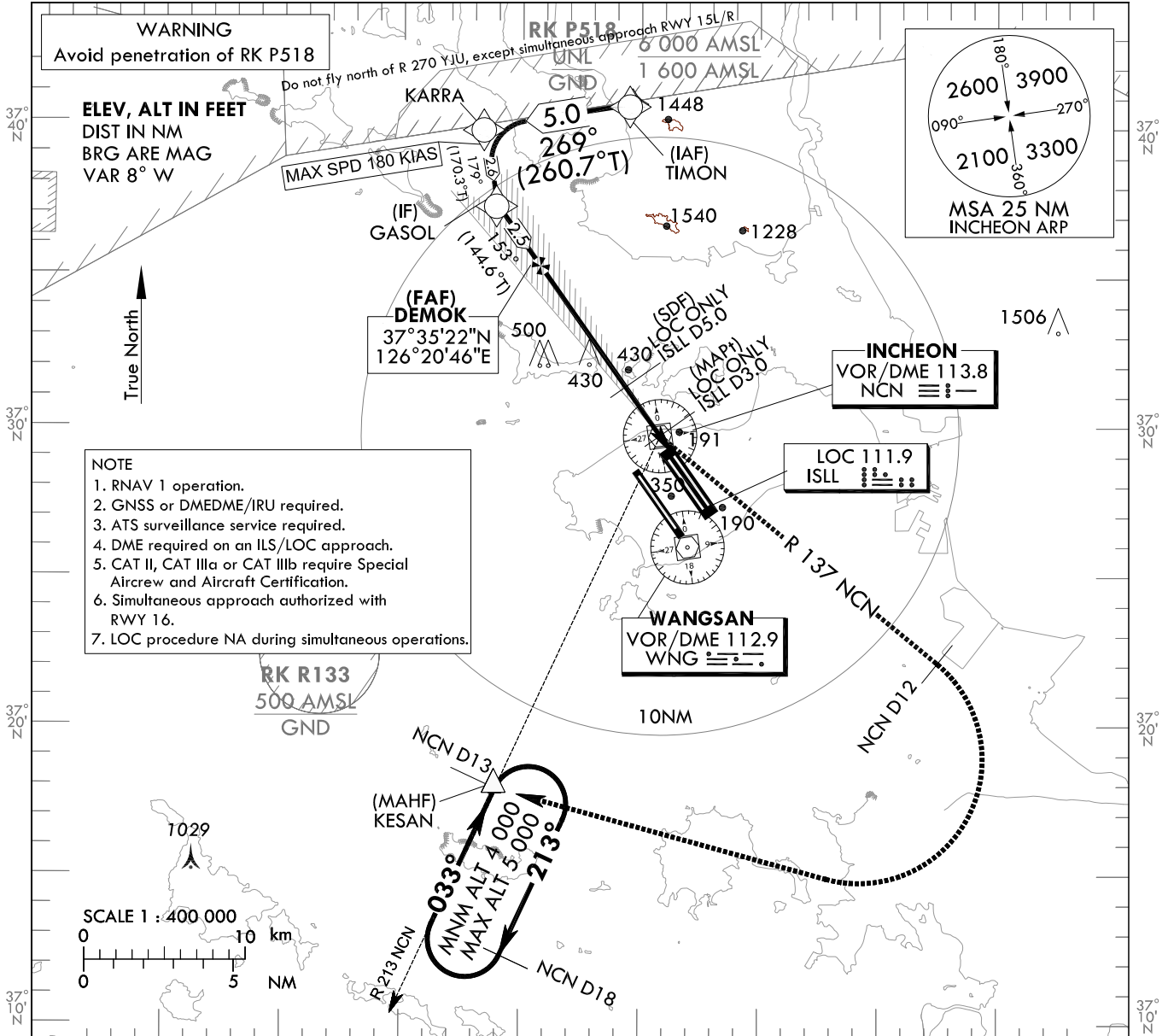
SEOUL APP 119.75  
119.1  
INCHEON TWR 118.2  
118.8

**SEOUL/Incheon Intl(RKSI)  
ILS Z or LOC Z RWY 15L  
CAT II & III**

Note : Approach under ICAO Flight Procedures.

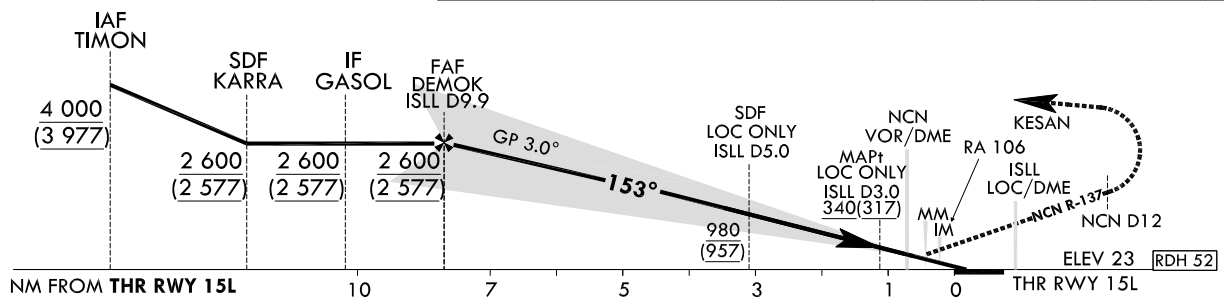
126°20' E

126°40' E



TRANSITION ALT 14 000  
TRANSITION LVL FL 140

RECOMMENDED PROFILE		DME ISLL	9	8	7	6	5	4	3
Final Approach Gradient 5.35%, 325 ft/NM		ALT(HGT)	2 292	1 967	1 642	1 316	991	666	340
			(2 269)	(1 944)	(1 619)	(1 293)	(968)	(643)	(317)



CATEGORY	DA(DH)/MDA(MDH)	A	B	C	D	DL
		223 (200)	RVR 550 m, VIS 800 m	1 200 m	700 m	1 400 m
Straight -in	CAT-I FULL	223 (200)				
	CAT-I ALS INOP	223 (200)				
	LOC GP INOP	340 (317)				
	LOC CP & ALS INOP	340 (317)				
CAT II	123(100)	300 m				
CAT IIIa	-		175 m			
CAT IIIb	-		75 m <sup>2</sup> /125 m			

**MISSED APPROACH**  
Climb to 520 ft on RWY Heading then turn LEFT to intercept and follow R 137 NCN to 12DME, continue climb to 4 000 ft RIGHT turn direct to KESAN. Hold as published.

\* Timing Not authorized for defining MAPT.  
\* Circling Not authorized.

1) For CAT D/DL aeroplane conducting an autoland.  
2) Aeroplane use Fail-operational system.

Change : Navigation information.

SEOUL/Incheon Intl(RKSI)  
ILS Z or LOC Z RWY 15L  
CAT II & III

AERONAUTICAL DATA TABULATION

ILS/LOC Approach to RWY 15L			
Fix / Point		Coordinates	
TIMON(IAF)		37°40'48.0" N	126°24'36.1" E
KARRA(SDF)		37°39'59.6" N	126°18'23.2" E
GASOL(IF)		37°37'24.7" N	126°18'56.4" E
DEMOK (FAF)	BRG 152.61°/9.95 NM ISLL	37°35'22.4" N	126°20'45.7" E
D5.0 ISLL(SDF LOC ONLY)	BRG 152.61°/5.00 NM ISLL	37°31'20.2" N	126°24'21.7" E
D3.0 ISLL(MAPt LOC ONLY)	BRG 152.61°/3.00 NM ISLL	37°29'42.2" N	126°25'48.9" E
NCN VOR/DME		37°29'41.7" N	126°25'49.2" E
THR RWY15L		37°29'02.20" N	126°26'24.56" E
ISLL DME		37°27'13.7" N	126°27'57.2" E
Climb to 520 ft	HDG 153	-	
D12 NCN	R 137 NCN/12.00 NM NCN	37°22'06.2" N	126°37'29.9" E
KESAN	BRG 213.07°/13.00 NM NCN	37°17'53.0" N	126°18'58.0" E

Change : Fix information(KESAN).

**INSTRUMENT  
APPROACH  
CHART - ICAO**

**AERODROME ELEV 23 ft**  
HEIGHTS RELATED TO  
THR RWY 15L - ELEV 23 ft

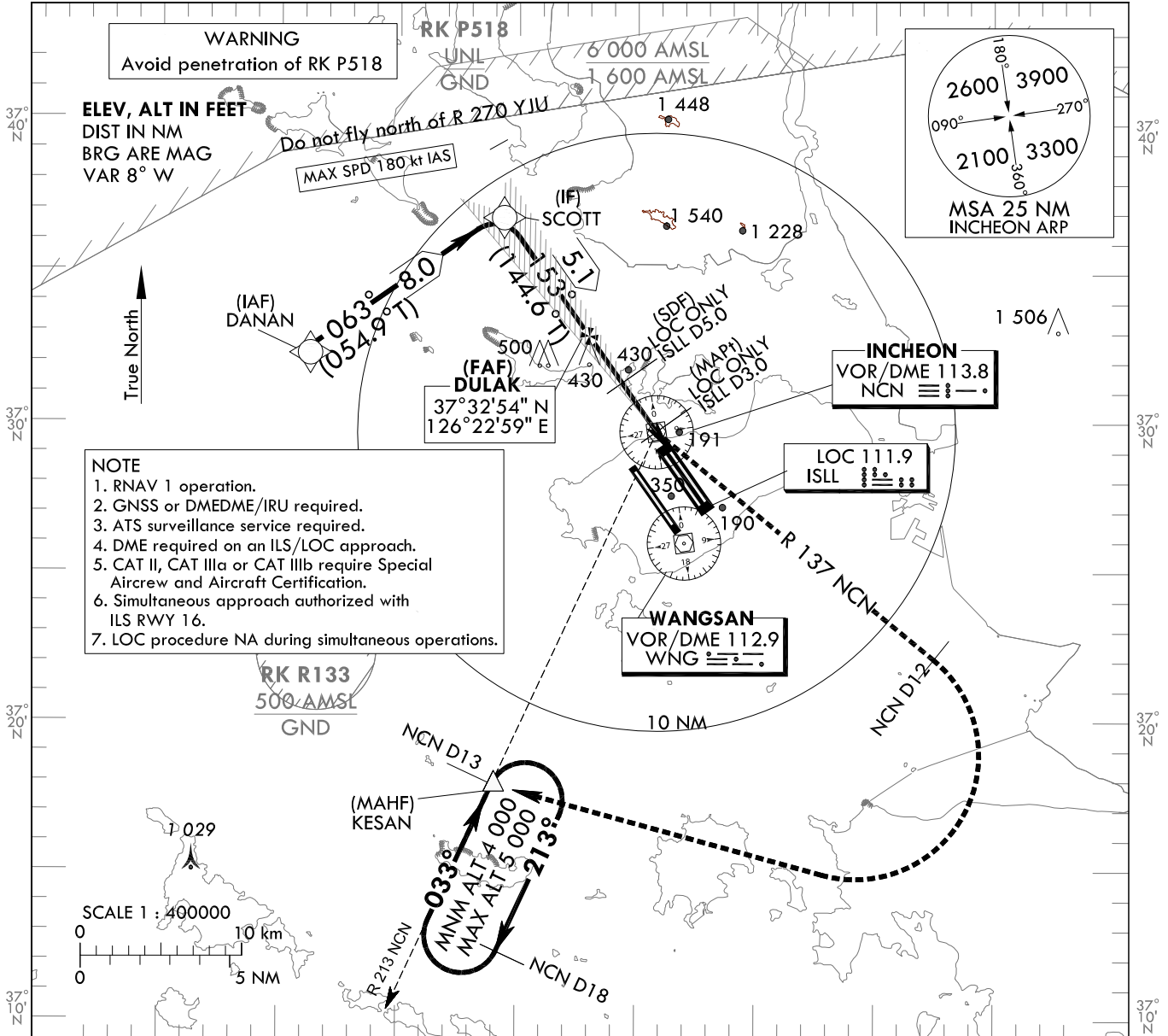
SEOUL APP 119.75  
119.1  
INCHEON TWR 118.2  
118.8

**SEOUL/Incheon Intl(RKSI)  
ILS Y or LOC Y RWY 15L  
CAT II & III**

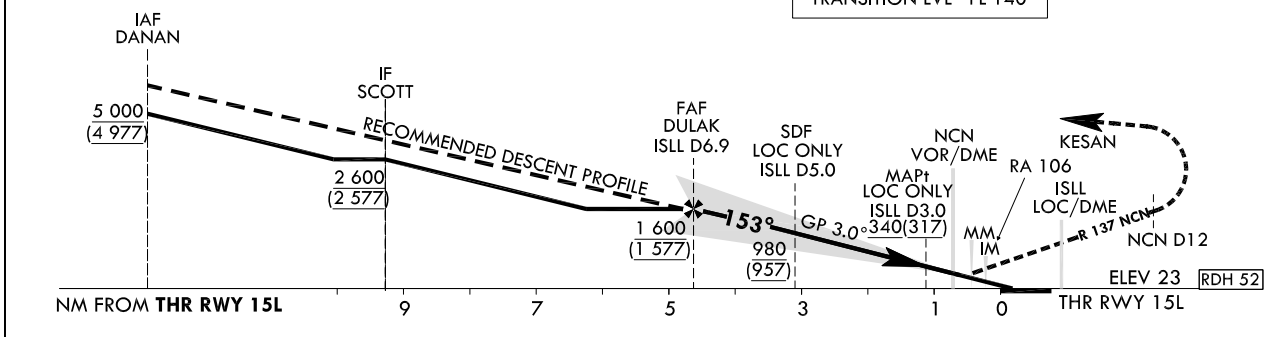
Note : Approach under ICAO Flight Procedures.

126°20'E

126°40'E



RECOMMENDED DESCENT PROFILE	DME ISLL	6	5	4	126°30'E	126°40'E
Final Approach Gradient 5.24%, 318 ft/NM	ALT(HGT)	1 304 (1 281)	979 (956)	657 (634)	TRANSITION ALT 14 000 TRANSITION LVL FL 140	



CATEGORY	DA(DH)/MDA(MDH)	A	B	C	D	DL
		CAT-I FULL 223 (200) CAT II 123(100) CAT IIIa - CAT IIIb -	RVR 550 m, VIS 800 m 1 200 m 700 m 1 400 m 300 m 175 m 75 m <sup>1</sup> /125 m			

**MISSED APPROACH**  
Climb to 520 ft on RWY Heading then turn LEFT to intercept and follow R 137 NCN to 12DME, continue climb to 4 000 ft RIGHT turn direct to KESAN. Hold as published.

\* Timing Not authorized for defining MAPt.  
\* Circling Not authorized.

1) For CAT D/DL aeroplane conducting an autoland.  
2) Aeroplane use Fail-operational system.

SEOUL/Incheon Intl(RKSI)  
ILS Y or LOC Y RWY 15L  
CAT II & III

AERONAUTICAL DATA TABULATION

ILS/LOC Approach to RWY 15L from DANAN to SCOTT(IF)		
Fix / Point	Coordinates	
DANAN(IAF)	37°32'26.0" N	126°11'04.0" E
SCOTT(IF)	BRG 62.77°/8.00 NM	37°37'01.6" N 126°19'17.0" E

ILS/LOC Approach to RWY 15L from SCOTT(IF) to MAHF		
Fix / Point	Coordinates	
DULAK (FAF)	BRG 152.51°/6.90 NM ISLL	37°32'53.5" N 126°22'58.5" E
D5.0 ISLL(SDF LOC ONLY)	BRG 152.51°/5.00 NM ISLL	37°31'20.2" N 126°24'21.7" E
D3.0 ISLL(MAP† LOC ONLY)	BRG 152.51°/3.00 NM ISLL	37°29'42.2" N 126°25'48.9" E
NCN VOR/DME	37°29'41.7" N	126°25'49.2" E
THR RWY15L	37°29'02.20" N	126°26'24.56" E
ISLL DME	37°27'13.7" N	126°27'57.2" E
Climb to 520 ft	HDG 153	-
D12 NCN	R 137 NCN/12.00 NM NCN	37°22'06.2" N 126°37'29.9" E
KESAN	BRG 213.07°/13.00 NM NCN	37°17'53.0" N 126°18'58.0" E

Change : Information of coordinates.

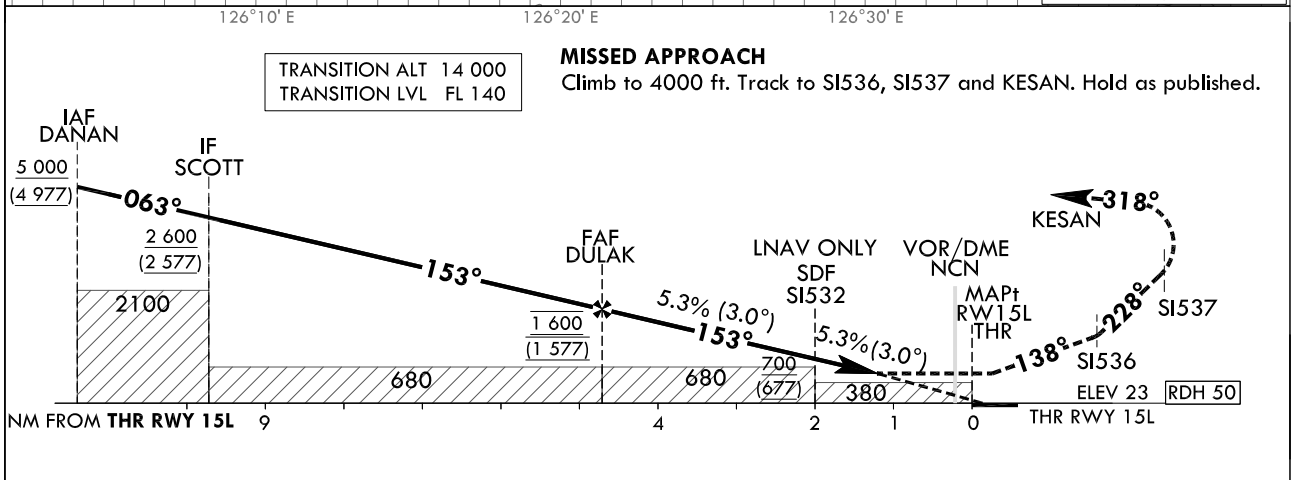
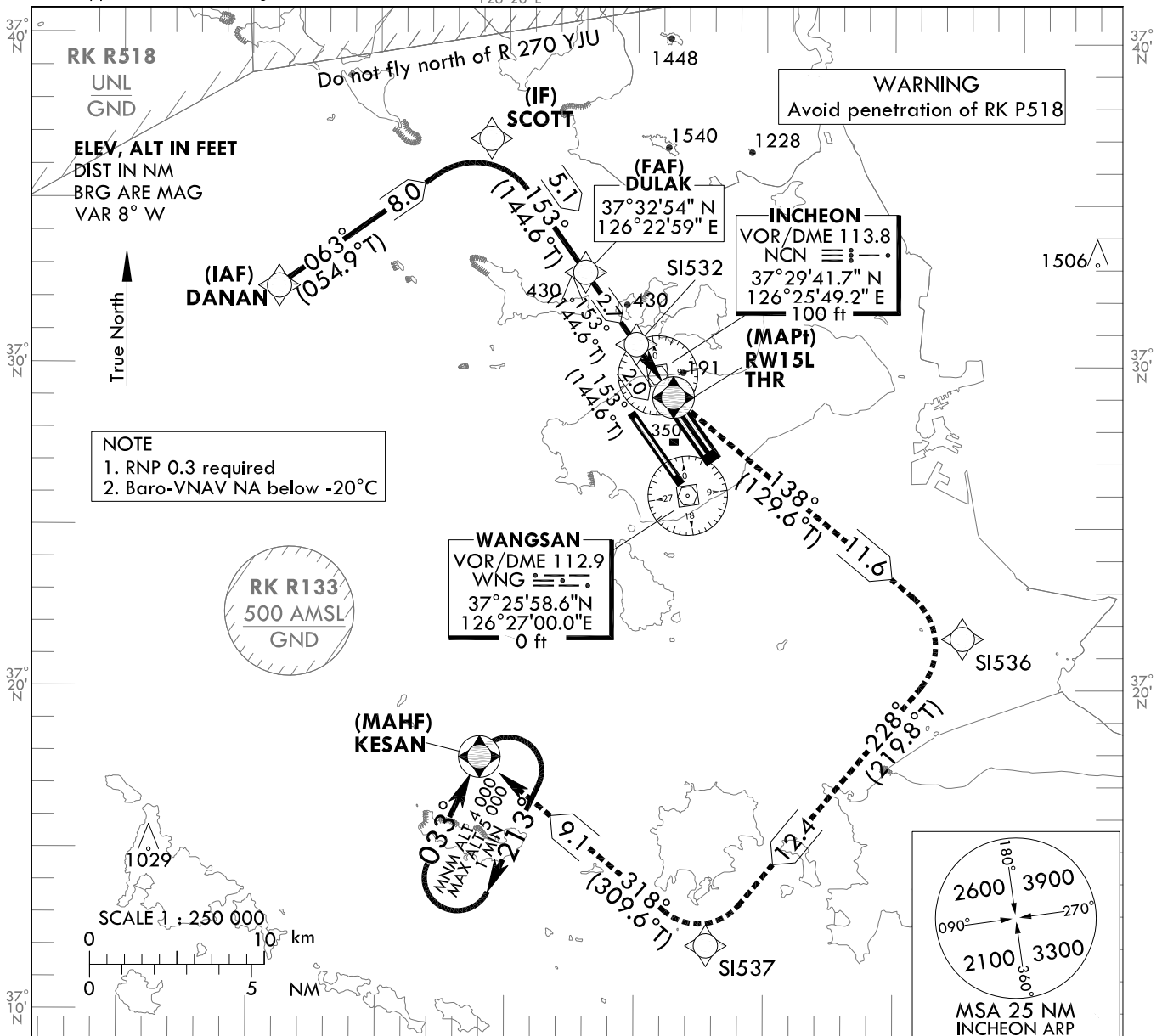
**INSTRUMENT  
APPROACH  
CHART - ICAO**

**AERODROME ELEV 23 ft**  
HEIGHTS RELATED TO  
THR RWY 15L - ELEV 23 ft

SEOUL APP 119.75  
119.1  
INCHEON TWR 118.2  
118.8

**SEOUL/Incheon Intl(RKSI)  
RNAV(GNSS)  
RWY 15L**

Note : Approach under ICAO Flight Procedures.



CATEGORY		MDA(H)/DA(H)	A	B	C	D	Knots						
LNAV	FULL	450 (427)		1 300 m			Rate of descent	V/V fpm	318	478	637	796	955
	ALS INOP			2 000 m									
LNAV/VNAV	FULL	430 (407)		1 200 m			* Timing Not authorized for defining MAPt. * Circling Not authorized.						
	ALS INOP			1 900 m									

Change : Minima.

SEOUL/Incheon Intl(RKSI)  
RNAV(GNSS)  
RWY 15L

AERONAUTICAL DATA TABULATION

Instrument Approach Procedure Coding Tables

RNAV(GNSS) RWY 15L

Serial Number	Path Descriptor	Waypoint Identifier	Fly-over	Course/Track °M(°T)	Distance (NM)	Turn direction	Altitude (ft)	Speed (kt)	Coordinates	VPA/TCH	Navigation specification	Remarks
001	IF	DANAN	-	-	-	-	+5 000	-	373226.0 N 1261104.0 E (R 291 NCN/D12, R 305 WNG/D14)	-	RNP APCH	IAF
002	TF	SCOTT	-	063 (054.9)	8.0	-	+2 600	-	373701.6 N 1261917.0 E (R 333 NCN/D9, R 339 WNG/D13)	-	RNP APCH	IF
003	TF	DULAK	-	153 (144.6)	5.1	-	@1 600	-	373253.5 N 1262258.5 E (R 333 NCN/D4, R 343 WNG/D8)	-	RNP APCH	FAF
004	TF	S1532	-	153 (144.6)	2.7	-	+700	-	373040.2 N 1262457.3 E (R 333 NCN/D1, R 349 WNG/D5)	-	RNP APCH	SDF
005	TF	RW15L	Y	153 (144.6)	2.0	-	+450	-	372902.2 N 1262624.6 E (R 152 NCN/D1, R 359 WNG/D3)	-3.01/50	RNP APCH	MAPt
006	TF	S1536	-	138 (129.6)	11.6	-	-	-	372135.4 N 1263739.8 E (R 139 NCN/D12, R 125 WNG/D10)	-	RNP APCH	-
007	TF	S1537	-	228 (219.8)	12.4	-	-	-	371203.9 N 1262745.9 E (R 183 NCN/D18, R 185 WNG/D14)	-	RNP APCH	-
008	TF	KESAN	Y	318 (309.6)	9.1	-	+4 000	-	371753.0 N 1261858.0 E (R 213 NCN/D13, R 226 WNG/D10)	-	RNP APCH	-
009	HM	KESAN	Y	033 (025.0)	-	R	-5 000 +4 000	-	371753.0 N 1261858.0 E (R 213 NCN/D13, R 226 WNG/D10)	-	RNP APCH	1 min (Outbound timing)

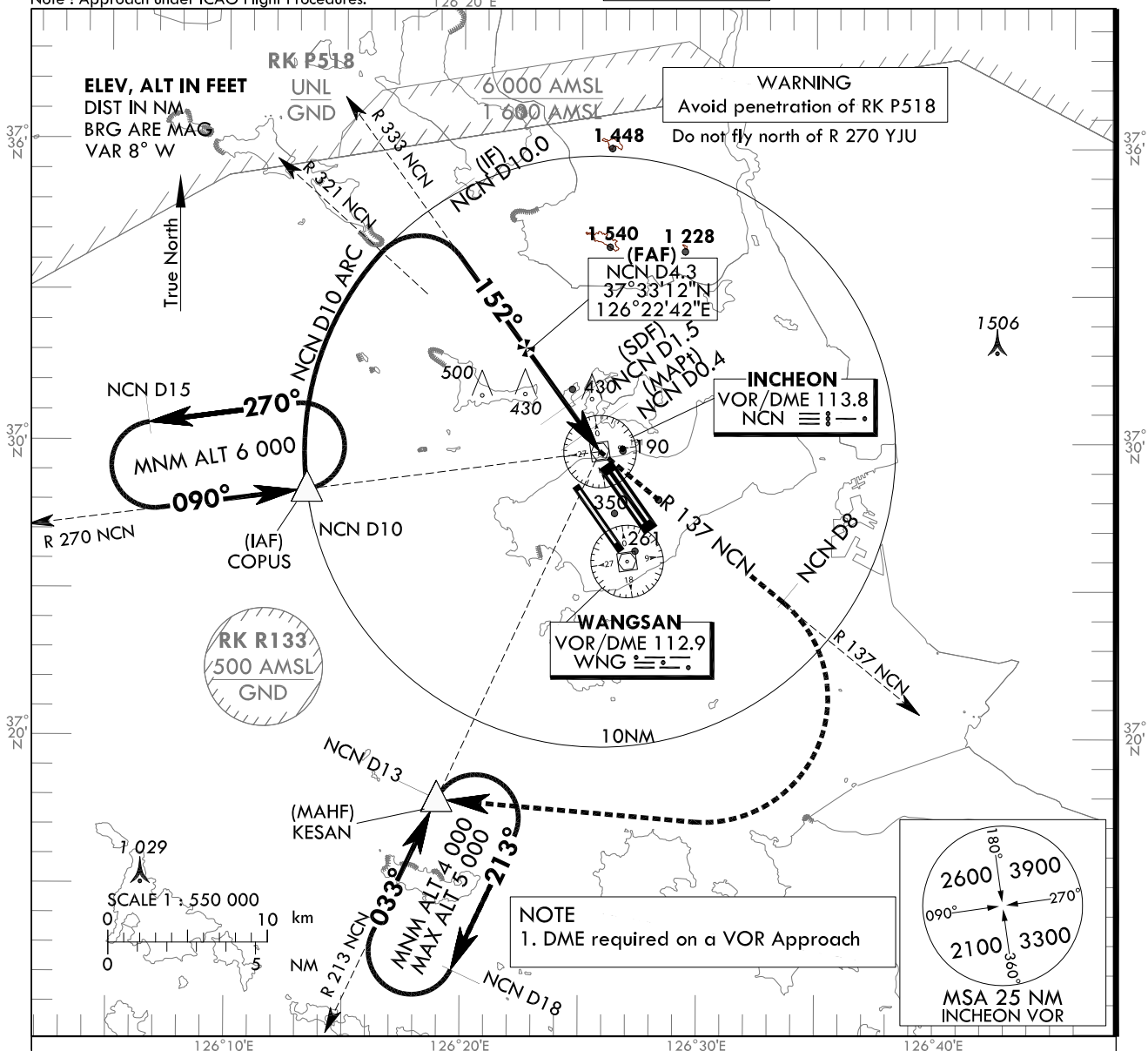
**INSTRUMENT APPROACH CHART - ICAO**

**AERODROME ELEV 23 ft**  
HEIGHTS RELATED TO  
THR RWY 15L - ELEV 23 ft

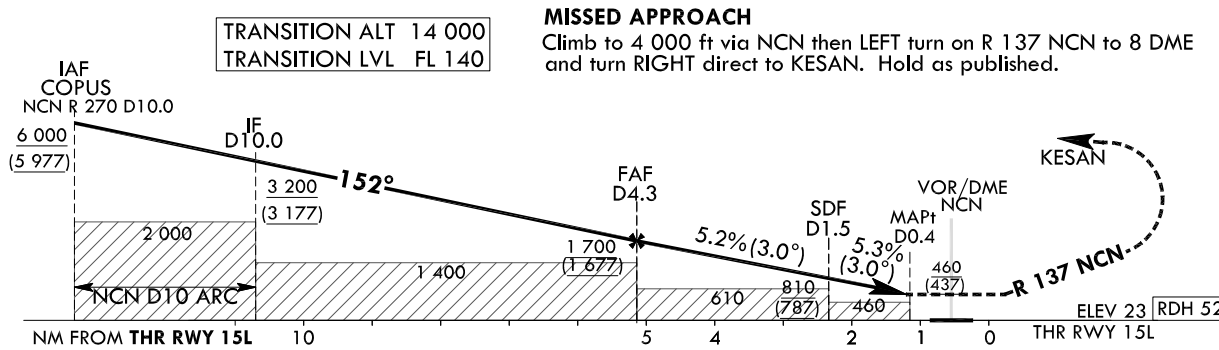
SEOUL APP 119.75  
119.1  
INCHEON TWR 118.2  
118.8

**SEOUL/Incheon Intl(RKSI) VOR RWY 15L**

Note : Approach under ICAO Flight Procedures.



RECOMMENDED DESCENT PROFILE		DME NCN	3	2	1
Final Approach Gradient 5.2%(317.9 ft/NM) to SDF, 5.3%(318.7 ft/NM) to THR		ALT(HGT)	1 287(1 264)	969(946)	650(628)



CATEGORY		MDA(MDH)	A	B	C	D	Knots						
Straight-in	FULL	460 (437)	1 600 m				Rate of descent	V/V fpm	318	477	636	795	954
	ALS INOP		2 300 m					* Timing Not authorized for defining MAPt. * Circling Not authorized.					

Change : Obstacle, Weather minima, DME NCN

SEOUL/Incheon Intl(RKSI)  
VOR  
RWY 15L

AERONAUTICAL DATA TABULATION

VOR Approach to RWY 15L from COPUS		
Fix / Point		Coordinates
COPUS(IAF)		37°28'21.0" N 126°13'22.1" E
D10 NCN(IF)	BRG 153.00°/10.00NM NCN	37°37'52.4" N 126°18'33.7" E
D4.3 NCN(FAF)	BRG 153.00°/4.30NM NCN	37°33'12.4" N 126°22'42.4" E
D1.5 NCN(SDF)	BRG 153.00°/1.50NM NCN	37°30'55.0" N 126°24'44.2" E
D0.4 NCN(MAPt)	BRG 153.00°/0.40NM NCN	37°30'01.0" N 126°25'32.1" E
NCN VOR/DME		37°29'41.7" N 126°25'49.2" E
THR RWY15L	Final approach descent angle 2.99°(FAF - SDF)/3.00°(SDF - THR)	37°29'02.20" N 126°26'24.56" E
D8 NCN	R 137 NCN/8.00NM NCN	37°24'40.1" N 126°33'39.1" E
KESAN	BRG 283.39°/13.00NM NCN	37°17'53.0" N 126°18'58.0" E

Change : Information of DATA TABULATION



**INSTRUMENT  
APPROACH  
CHART - ICAO**

**AERODROME ELEV 23 ft**  
HEIGHTS RELATED TO  
THR RWY 15R - ELEV 23 ft

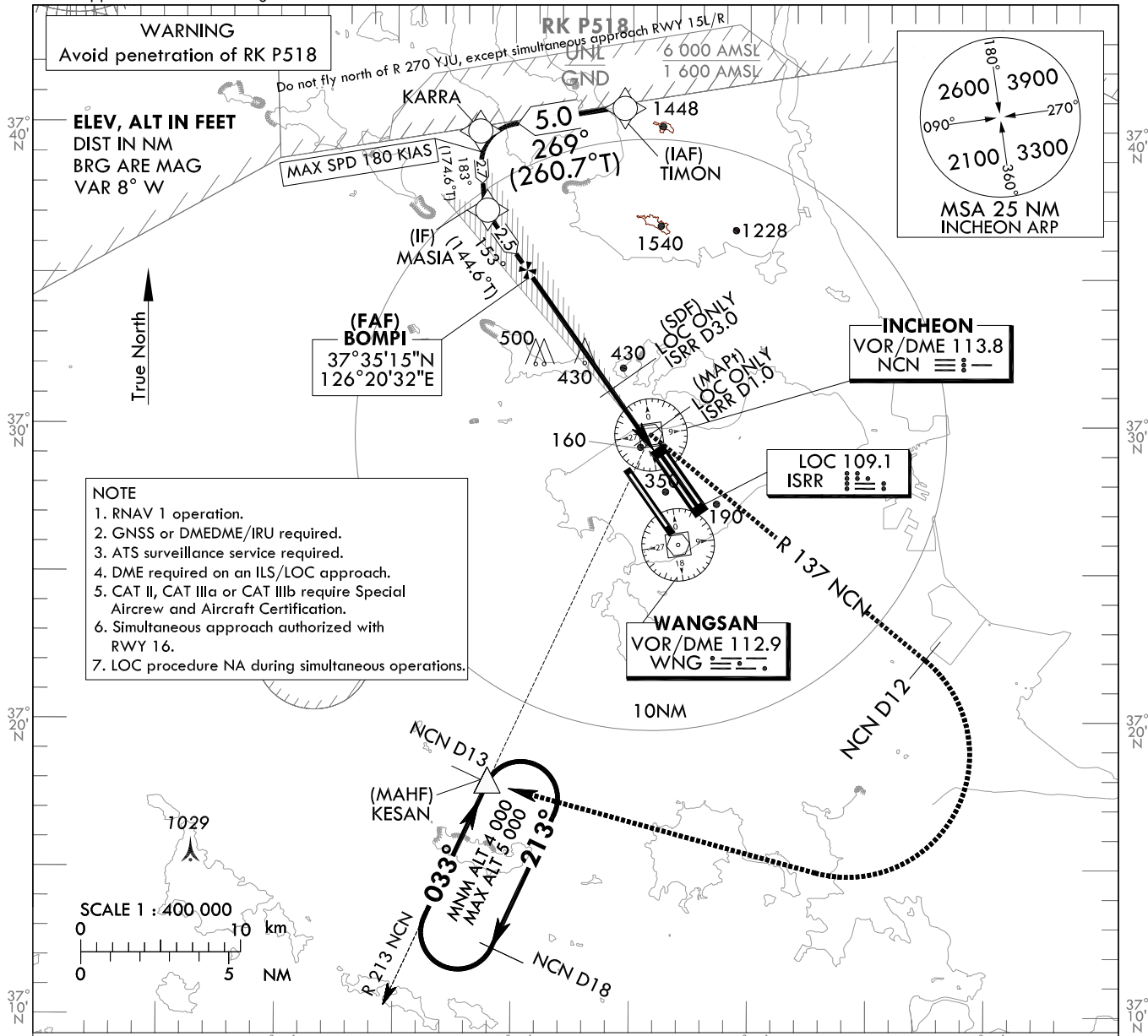
SEOUL APP 119.75  
119.1  
INCHEON TWR 118.2  
118.8

**SEOUL/Incheon Intl(RKSI)  
ILS Z or LOC Z RWY 15R  
CAT II & III**

Note : Approach under ICAO Flight Procedures.

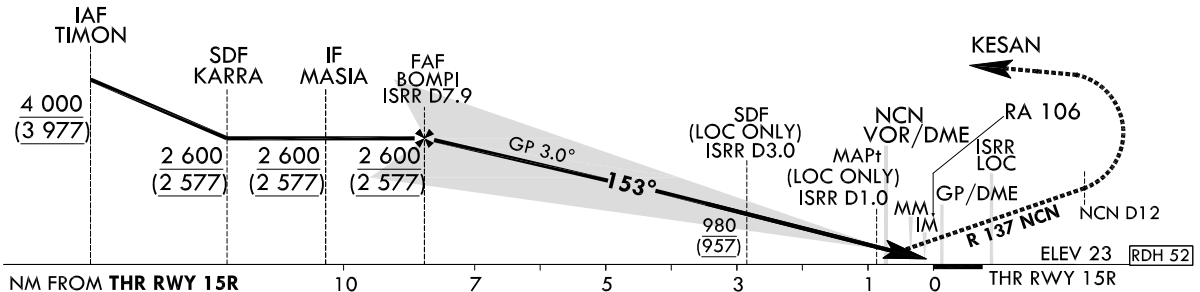
126°20' E

126°40' E



TRANSITION ALT 14 000  
TRANSITION LVL FL 140

RECOMMENDED PROFILE		DME ISRR	7	6	5	4	3	2
Final Approach Gradient 5.35%, 325 ft/NM		ALT(HGT)	2 299 (2 276)	1 974 (1 951)	1 649 (1 626)	1 323 (1 300)	998 (975)	673 (650)



CATEGORY	DA(DH)/MDA(MDH)	A	B	C	D	DL
		RVR 550 m, VIS 800 m				
Straight-in	CAT-I FULL	223 (200)				
	CAT-I ALS INOP		1 200 m			
	LOC GP INOP	370 (347)	900 m			
	LOC GP & ALS INOP		1 600 m			
	CAT II	123(100)	300 m	300 m <sup>1)</sup> /350 m		
CAT IIIa	-	175 m				
CAT IIIb	-	75 m <sup>2)</sup> /125 m				

**MISSED APPROACH**  
Climb to 520 ft on RWY Heading then turn LEFT to intercept and follow R 137 NCN to 12DME, continue climb to 4 000 ft RIGHT turn direct to KESAN.  
Hold as published.

1) For CAT D/DL aeroplane conducting an autoland.  
2) Aeroplane use Fail-operational system.

\* Timing Not authorized for defining MAPt.  
\* Circling Not authorized.

Change : Minima.

SEOUL/Incheon Intl(RKSI)  
ILS Z or LOC Z RWY 15R  
CAT II & III

AERONAUTICAL DATA TABULATION

ILS/LOC Approach to RWY 15R		
Fix / Point		Coordinates
TIMON(IAF)		37°40'48.0" N 126°24'36.1" E
KARRA(SDF)		37°39'59.6" N 126°18'23.2" E
MASIA(IF)		37°37'16.9" N 126°18'42.6" E
BOMPI(FAF)	BRG 152.61°/7.92 NM ISRR	37°35'14.6" N 126°20'31.9" E
D3.0 ISRR(SDF LOC ONLY)	BRG 152.61°/3.00 NM ISRR	37°31'13.4" N 126°24'07.1" E
D1.0 ISRR(MAPt LOC ONLY)	BRG 152.61°/1.00 NM ISRR	37°29'35.3" N 126°25'34.4" E
NCN VOR/DME		37°29'41.7" N 126°25'49.2" E
THR RWY15R		37°28'54.44" N 126°26'10.82" E
ISRR DME		37°28'48.7" N 126°26'21.9" E
Climb to 520 ft	HDG 153	-
D12 NCN	R 137 NCN/12.00 NM NCN	37°22'06.2" N 126°37'29.9" E
KESAN	BRG 213.07°/13.00 NM NCN	37°17'53.0" N 126°18'58.0" E

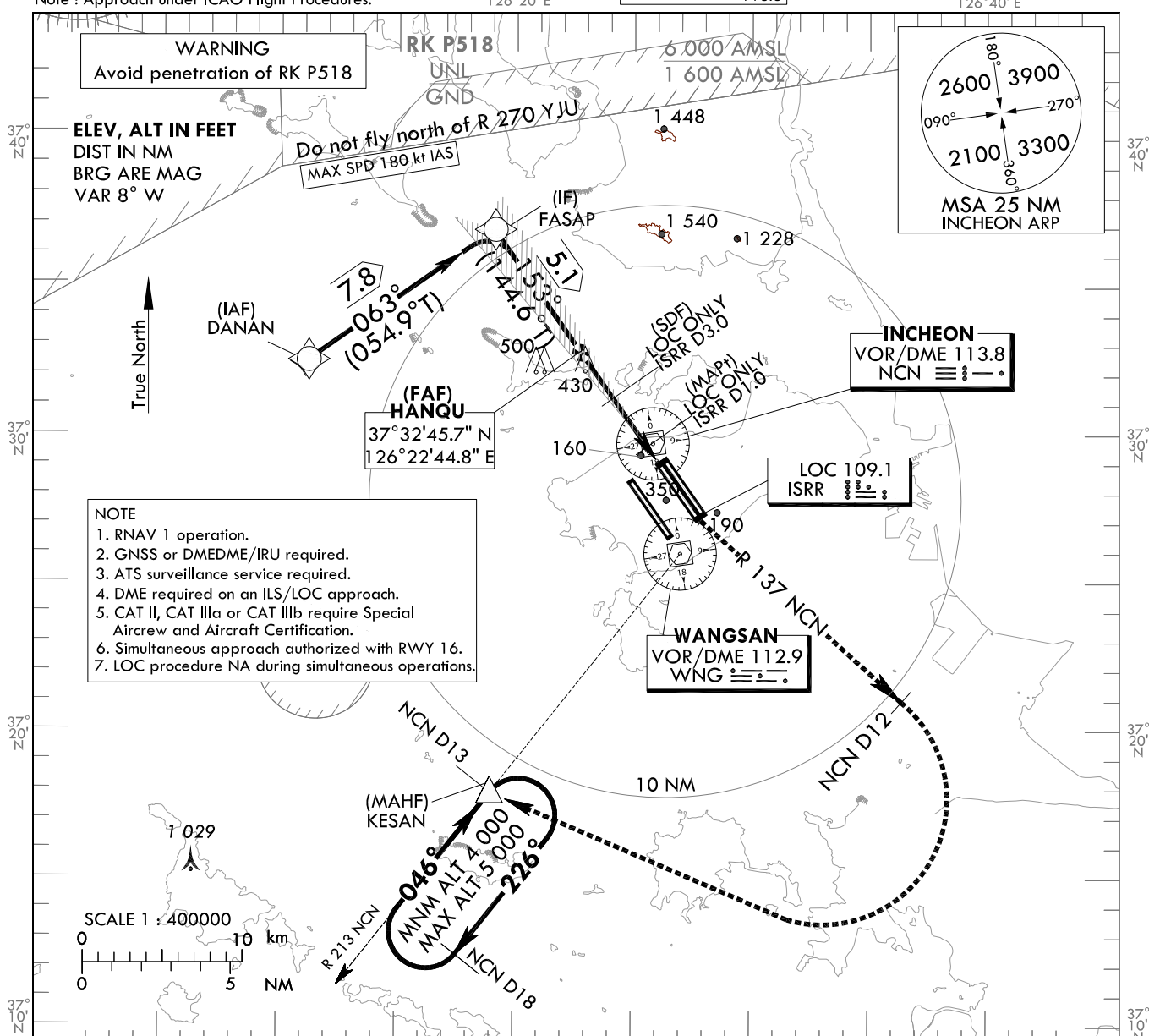
**INSTRUMENT  
APPROACH  
CHART - ICAO**

**AERODROME ELEV 23 ft**  
HEIGHTS RELATED TO  
THR RWY 15R - ELEV 23 ft  
126°20' E

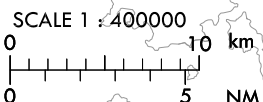
SEOUL APP 119.75  
119.1  
INCHEON TWR 118.2  
118.8

**SEOUL/Incheon Intl(RKSI)  
ILS Y or LOC Y RWY 15R  
CAT II & III**

Note : Approach under ICAO Flight Procedures.

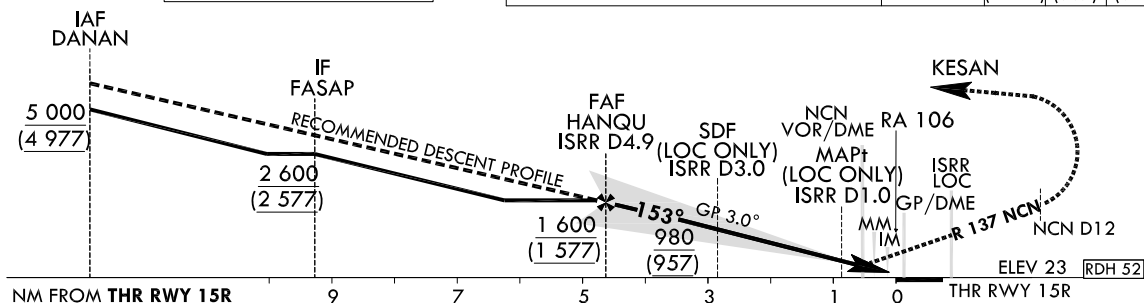


- NOTE
1. RNAV 1 operation.
  2. GNSS or DMEDME/IRU required.
  3. ATS surveillance service required.
  4. DME required on an ILS/LOC approach.
  5. CAT II, CAT IIIa or CAT IIIb require Special Aircrew and Aircraft Certification.
  6. Simultaneous approach authorized with RWY 16.
  7. LOC procedure NA during simultaneous operations.



TRANSITION ALT 14 000  
TRANSITION LVL FL 140

RECOMMENDED PROFILE		DME ISRR	4	3	2
Final Approach Gradient 5.31%, 323 ft/NM		ALT(HGT)	1 313 (1 290)	990 (967)	667 (644)



CATEGORY	DA(DH)/MDA(MDH)	A	B	C	D	DL	
							RVR 550 m, VIS 800 m
Straight-in	CAT-I	FULL	223 (200)				
		ALS INOP		1 200 m			
	LOC	GP INOP	370 (347)	900 m			
		GP & ALS INOP		1 600 m			
		CAT II	123(100)	300 m	300 m <sup>1)</sup> /350 m		
CAT IIIa	-	175 m					
CAT IIIb	-	75 m <sup>2)</sup> /125 m					

**MISSED APPROACH**  
Climb to 520 ft on RWY Heading then turn LEFT to intercept and follow R 137 NCN to 12 DME, continue climb to 4 000 ft RIGHT turn direct to KESAN.  
Hold as published.

\* Timing Not authorized for defining MAPt.  
\* Circling Not authorized.

1) For CAT D/DL aeroplane conducting an autoland.  
2) Aeroplane use Fail-operational system.

Change : Information of Missed Approach procedure.

SEOUL/Incheon Intl(RKSI)  
ILS Y or LOC Y RWY 15R  
CAT II & III

AERONAUTICAL DATA TABULATION

ILS/LOC Approach to RWY 15R from DANAN to FASAP(IF)	
Fix / Point	Coordinates
DANAN(IAF)	37°32'26.0" N 126°11'04.0" E
FASAP(IF)	37°36'53.8" N 126°19'03.3" E

ILS/LOC Approach to RWY 15R from FASAP(IF) to MAHF	
Fix / Point	Coordinates
HANQU(FAF)	BRG 152.61°/4.89 NM ISRR 37°32'45.7" N 126°22'44.8" E
D3.0 ISRR(SDF) (LOC ONLY)	BRG 152.61°/3.00 NM ISRR 37°31'13.4" N 126°24'07.1" E
D1.0 ISRR(MAPt) (LOC ONLY)	BRG 152.61°/1.00 NM ISRR 37°29'35.3" N 126°25'34.4" E
THR RWY15R	37°28'54.44" N 126°26'10.82" E
ISRR DME	37°28'48.7" N 126°26'21.9" E
→ Climb to 520 ft	HDG 153 -
D12 NCN	R 137 NCN/12.00 NM NCN 37°22'06.2" N 126°37'29.9" E
KESAN	BRG 213.07°/13.00 NM NCN 37°17'53.0" N 126°18'58.0" E

Change : Withdrawal of WNG VOR/DME, Information of Fix/Point and coordinates.

**INSTRUMENT  
APPROACH  
CHART - ICAO**

**AERODROME ELEV 23 ft**  
HEIGHTS RELATED TO  
THR RWY 15R - ELEV 23 ft

SEOUL APP	119.75
	119.1
INCHEON TWR	118.2
	118.8

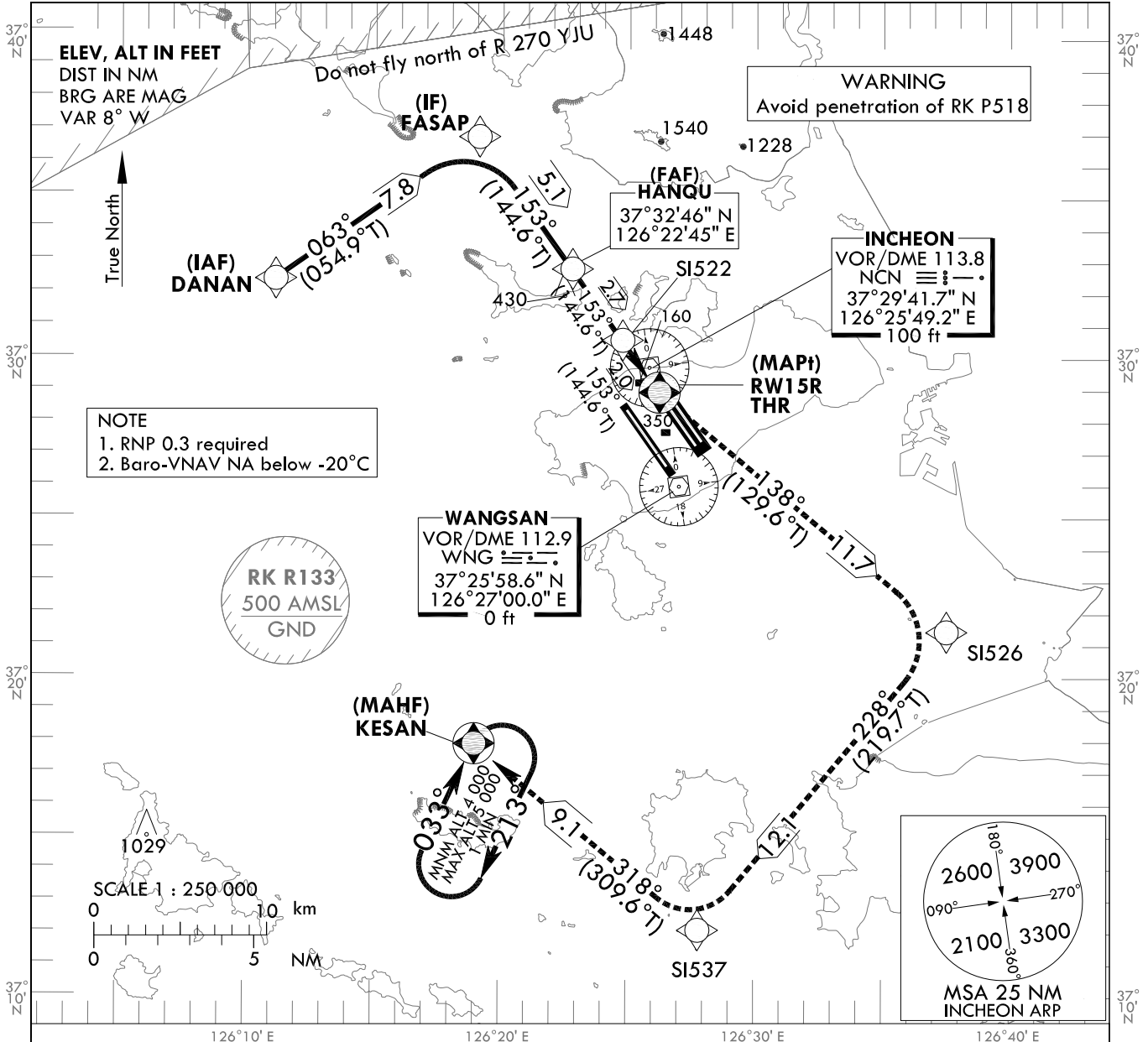
**SEOUL/Incheon Intl(RKSI)  
RNAV(GNSS)  
RWY 15R**

Note : Approach under ICAO Flight Procedures.

126°20' E

126°30' E

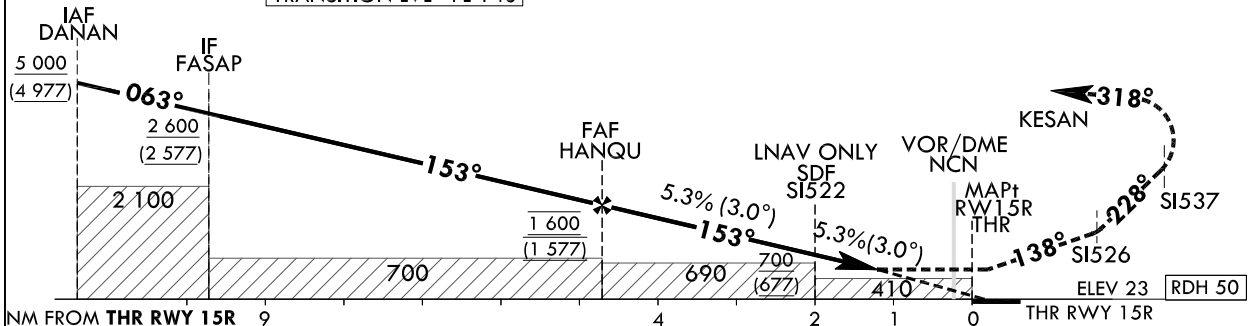
126°40' E



TRANSITION ALT 14 000  
TRANSITION LVL FL 140

**MISSED APPROACH**

Climb to 4 000 ft. Track to SI526, SI537 and KESAN. Hold as published.



CATEGORY		MDA(H)/DA(H)	A	B	C	D	Knots						
LNAV	FULL	540 (517)		1 600 m			Rate of descent	V/V fpm	318	478	637	796	955
	ALS INOP			2 400 m									
LNAV/VNAV	FULL	430 (407)		1 200 m			* Timing Not authorized for defining MAPt. * Circling Not authorized.						
	ALS INOP			1 900 m									

Change : Minima.

SEOUL/Incheon Intl(RKSI)  
RNAV(GNSS)  
RWY 15R

AERONAUTICAL DATA TABULATION

Instrument Approach Procedure Coding Tables

RNAV(GNSS) RWY 15R

Serial Number	Path Descriptor	Waypoint Identifier	Fly-over	Course/Track °M(°T)	Distance (NM)	Turn direction	Altitude (ft)	Speed (kt)	Coordinates	VPA/TCH	Navigation specification	Remarks
001	IF	DANAN	-	-	-	-	+5 000	-	373226.0 N 1261104.0 E (R 291 NCN/D12, R 305 WNG/D14)	-	RNP APCH	IAF
002	TF	FASAP	-	063 (054.9)	7.8	-	+2 600	-	373653.8 N 1261903.3 E (R 331 NCN/D9, R 338 WNG/D13)	-	RNP APCH	IF
003	TF	HANQU	-	153 (144.6)	5.1	-	@1 600	-	373245.7 N 1262244.8 E (R 329 NCN/D4, R 341 WNG/D8)	-	RNP APCH	FAF
004	TF	S1522	-	153 (144.6)	2.7	-	+700	-	373032.4 N 1262443.6 E (R 322 NCN/D1, R 346 WNG/D5)	-	RNP APCH	SDF
005	TF	RW15R	Y	153 (144.6)	2.0	-	+470	-	372854.4 N 1262610.8 E (R 168 NCN/D1, R 355 WNG/D3)	-3.01/50	RNP APCH	MAPt
006	TF	S1526	-	138 (129.6)	11.7	-	-	-	372125.5 N 1263729.3 E (R 140 NCN/D12, R 126 WNG/D10)	-	RNP APCH	-
007	TF	S1537	-	228 (219.8)	12.1	-	-	-	371203.9 N 1262745.9 E (R 183 NCN/D18, R 185 WNG/D14)	-	RNP APCH	-
008	TF	KESAN	Y	318 (309.6)	9.1	-	+4 000	-	371753.0 N 1261858.0 E (R 213 NCN/D13, R 226 WNG/D10)	-	RNP APCH	-
009	H/M	KESAN	Y	033 (025.0)	-	R	-5 000 +4 000	-	371753.0 N 1261858.0 E (R 213 NCN/D13, R 226 WNG/D10)	-	RNP APCH	<sup>1</sup> min (Outbound timing)

**INSTRUMENT APPROACH CHART - ICAO**

**AERODROME ELEV 23 ft**  
HEIGHTS RELATED TO  
THR RWY 16 - ELEV 23 ft

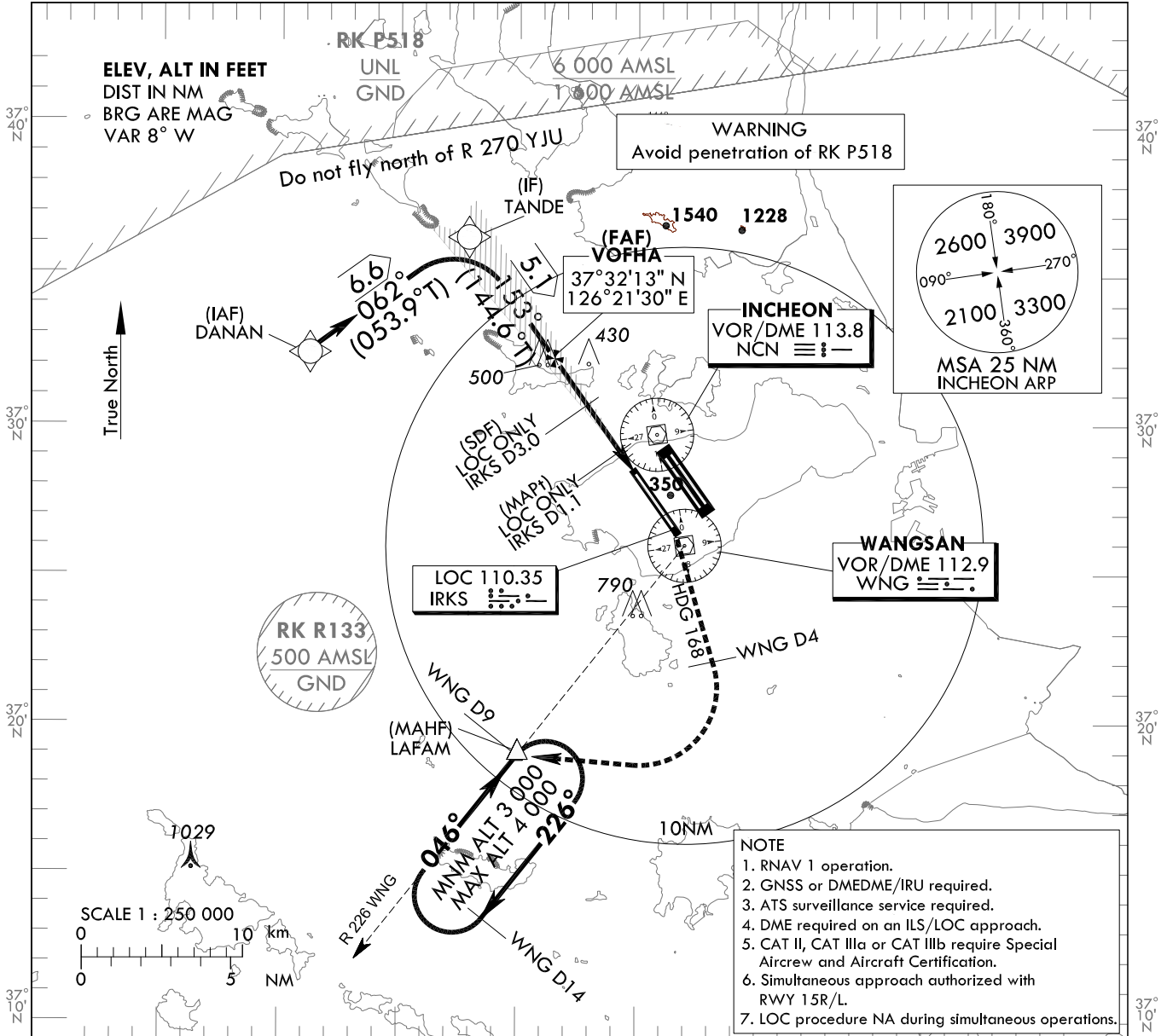
SEOUL APP 119.75  
119.1  
INCHEON TWR 118.2  
118.8

**SEOUL/Incheon Intl(RKSI) ILS or LOC RWY 16**  
CAT II & III

Note : Approach under ICAO Flight Procedures.

126°20' E

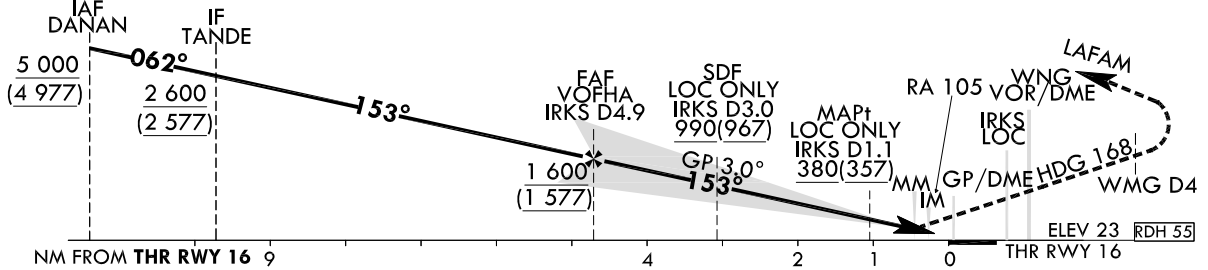
126°40' E



- NOTE**
1. RNAV 1 operation.
  2. GNSS or DMEDME/IRU required.
  3. ATS surveillance service required.
  4. DME required on an ILS/LOC approach.
  5. CAT II, CAT IIIa or CAT IIIb require Special Aircrew and Aircraft Certification.
  6. Simultaneous approach authorized with RWY 15R/L.
  7. LOC procedure NA during simultaneous operations.

TRANSITION ALT 14 000  
TRANSITION LVL FL 140

RECOMMENDED PROFILE	DME IRKS	4	3	2
Final Approach Gradient 5.24%, 318 ft/NM	ALT(HGT)	1 310 (1 287)	986 (963)	663 (640)



CATEGORY	DA(DH)/MDA(MDH)	A					B					C					D					DL				
		A					B					C					D					DL				
Straight-in	CAT-I (CG 2.5%)	FULL	436 (413)					1 200 m					1 900 m					RVR 550 m, VIS 800 m								
		ALS INOP	223 (200)					1 200 m					900 m					1 600 m								
	CAT-I (CG 4.0%)	FULL	380 (357)					1 200 m					900 m					1 600 m								
		ALS INOP	123(100)					300 m					300 m <sup>1)</sup> /350 m					175 m								
	CAT II		75 m <sup>2)</sup> /125 m																							
	CAT IIIa																									
CAT IIIb																										

**MISSED APPROACH**  
Climb to 500 ft on RWY Heading then RIGHT turn on Heading 168° to WNG 4 DME, continue climb to 3 000 ft RIGHT turn direct to LAFAM. Hold as published.

**NOTE**

1. Missed approach turn limited to 210 KIAS maximum.
2. Missed approach minimum climb gradient of 2.5% to 3 000 ft (DH 413), 4% to 3 000 ft (DH 200 or 100).

\* Timing Not authorized for defining MAPt.  
\* Circling Not authorized.

1) For CAT D/DL aeroplane conducting an autoland.  
2) Aeroplane use Fail-operational system.

SEOUL/Incheon Intl(RKSI)  
ILS or LOC RWY 16  
CAT II & III

AERONAUTICAL DATA TABULATION

ILS/LOC Approach to RWY 16 from DANAN		
Fix / Point		Coordinates
DANAN(IAF)		37°32'26.0" N 126°11'04.0" E
TANDE(IF)	BRG 061.75°/6.64NM	37°36'21.0" N 126°17'48.8" E
VOFHA (FAF)	BRG 152.51°/4.90NM IRKS	37°32'12.9" N 126°21'30.4" E
D3.0 IRKS(SDF LOC ONLY)	BRG 152.51°/3.00NM IRKS	37°30'40.7" N 126°22'52.6" E
D1.1 IRKS(MAPt LOC ONLY)	BRG 152.51°/1.10NM IRKS	37°29'07.6" N 126°24'15.5" E
THR RWY16		37°28'22.11" N 126°24'56.05" E
IRKS DME		37°28'11.4" N 126°24'59.7" E
WNG VOR/DME		37°25'58.6" N 126°27'00.0" E
Climb to 500 ft	HDG 153	-
D4 WNG		-
LAFAM	BRG 282.42°/9.00NM WNG	37°18'55.0" N 126°19'59.0" E

Change : Fix coordinates(WNG).



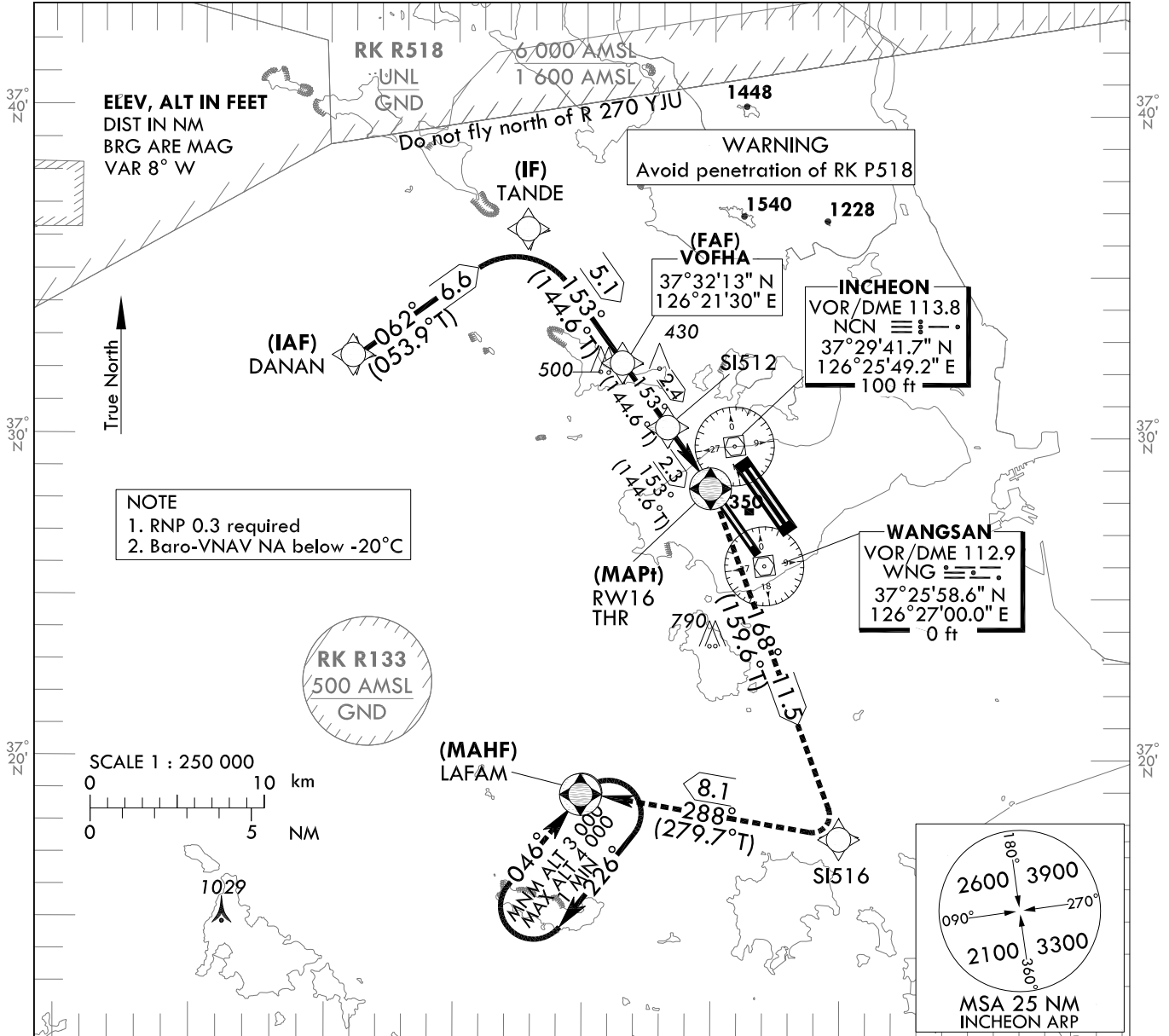
**INSTRUMENT  
APPROACH  
CHART - ICAO**

**AERODROME ELEV 23 ft**  
HEIGHTS RELATED TO  
THR RWY 16 - ELEV 23 ft

SEOUL APP 119.75  
119.1  
INCHEON TWR 118.2  
118.8

**SEOUL/Incheon Intl(RKSI)  
RNAV(GNSS)  
RWY 16**

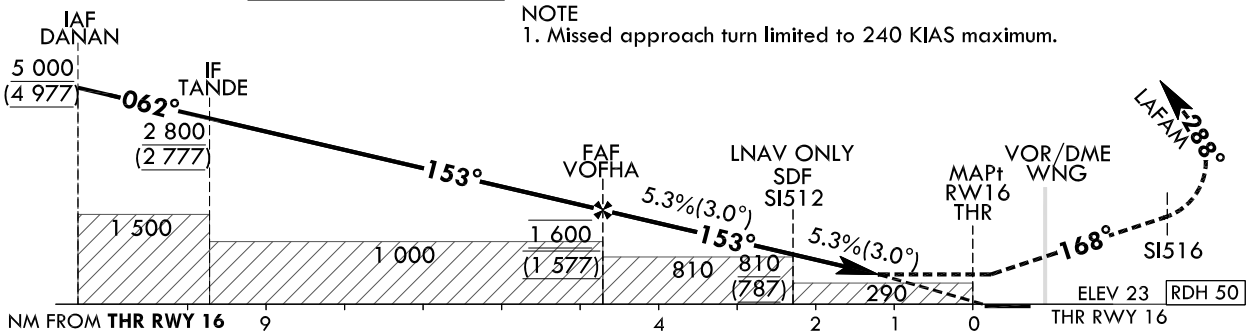
Note : Approach under ICAO Flight Procedures.



126°10' E                      126°20' E                      126°30' E

**MISSED APPROACH**  
Climb to 3 000 ft. Track to SI516 and LAFAM. Hold as published.

NOTE  
1. Missed approach turn limited to 240 KIAS maximum.



CATEGORY		MDA(H)/DA(H)	A	B	C	D	Knots					
LNAV	FULL	520 (497)		1 500 m			Rate of descent V/V fpm	60	90	120	150	180
	ALS INOP			2 300 m				318	478	637	796	955
LNAV/VNAV	FULL	430 (407)		1 200 m			* Timing Not authorized for defining MAPt. * Circling Not authorized.					
	ALS INOP			1 900 m								

Change : Minima.

SEOUL/Incheon Intl(RKSI)  
RNAV(GNSS)  
RWY 16

AERONAUTICAL DATA TABULATION

Instrument Approach Procedure Coding Tables

RNAV(GNSS) RWY 16

Serial Number	Path Descriptor	Waypoint Identifier	Fly-over	Course/Track °M(°T)	Distance (NM)	Turn direction	Altitude (ft)	Speed (kt)	Coordinates	VPA/TCH	Navigation specification	Remarks
001	IF	DANAN	-	-	-	-	+5 000	-	373226.0 N 1261104.0 E (R 291 NCN/D12, R 305 WNG/D14)	-	RNP APCH	IAF
002	TF	TANDE	-	062 (053.9)	6.6	-	+2 800	-	373621.0 N 1261748.8 E (R 324 NCN/D9, R 333 WNG/D13)	-	RNP APCH	IF
003	TF	VOFHA	-	153 (144.6)	5.1	-	@1 600	-	373212.9 N 1262130.4 E (R 31.4 NCN/D4, R 333 WNG/D8)	-	RNP APCH	FAF
004	TF	SI512	-	153 (144.6)	2.4	-	+810	-	373014.8 N 1262315.7 E (R 293 NCN/D2, R 333 WNG/D5)	-	RNP APCH	SDF
005	TF	RW16	Y	153 (144.6)	2.3	-	+460	-	372822.1 N 1262456.1 E (R 216 NCN/D2, R 333 WNG/D3)	-3.01/50	RNP APCH	MAPt
006	TF	SI516	-	168 (159.6)	11.5	-	-	-240	371734.0 N 1262957.5 E (R 173 NCN/D13, R 172 WNG/D9)	-	RNP APCH	-
007	TF	LAFAM	Y	288 (279.7)	8.1	-	+3 000	-240	371855.0 N 1261959.0 E (R 211 NCN/D12, R 226 WNG/D9)	-	RNP APCH	-
008	HM	LAFAM	Y	046 (038.4)	-	R	-4 000 +3 000	-	371855.0 N 1261959.0 E (R 211 NCN/D12, R 226 WNG/D9)	-	RNP APCH	1 min (Outbound timing)

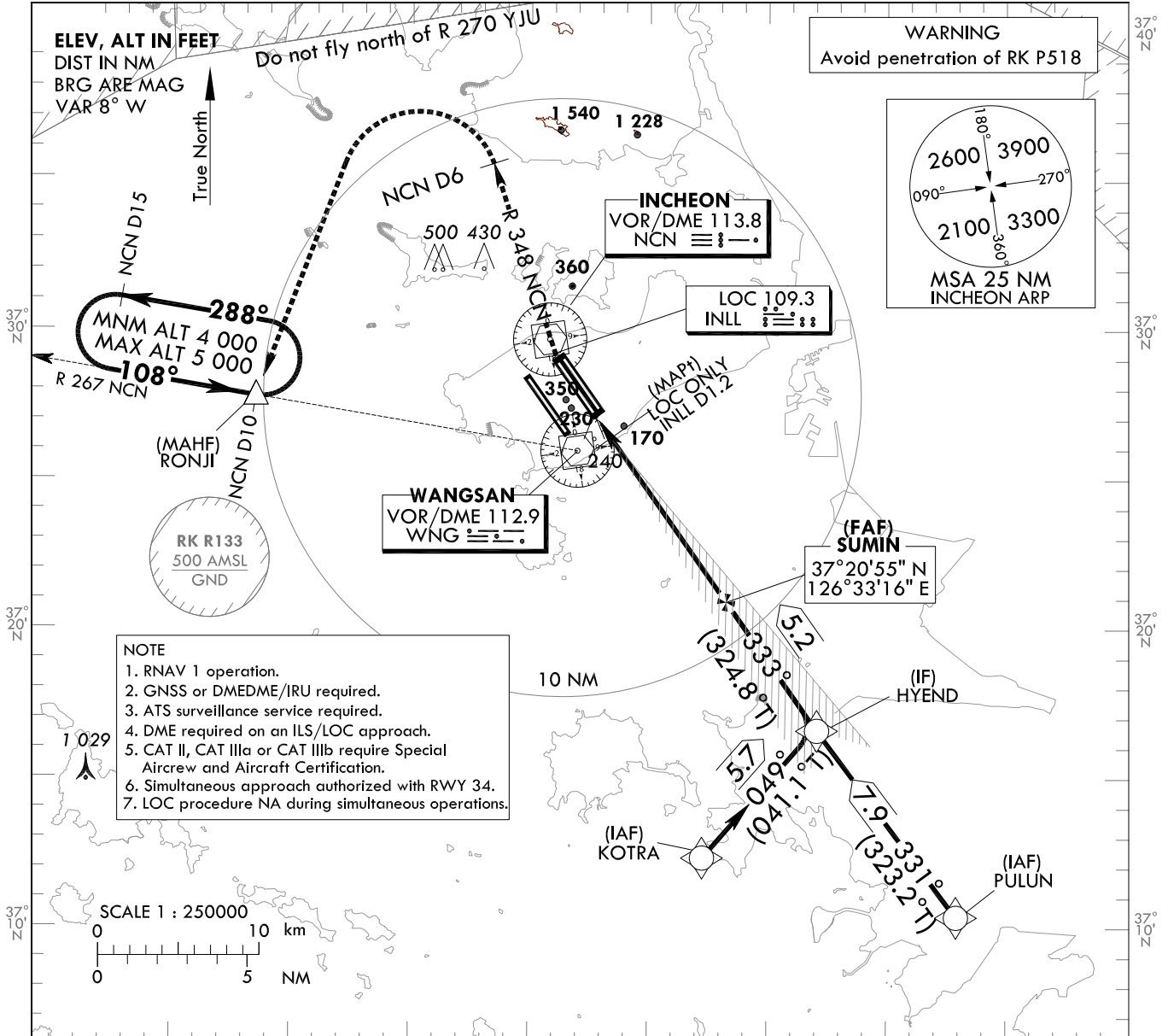
**INSTRUMENT APPROACH CHART - ICAO**

**AERODROME ELEV 23 ft**  
HEIGHTS RELATED TO  
THR RWY 15R - ELEV 23 ft

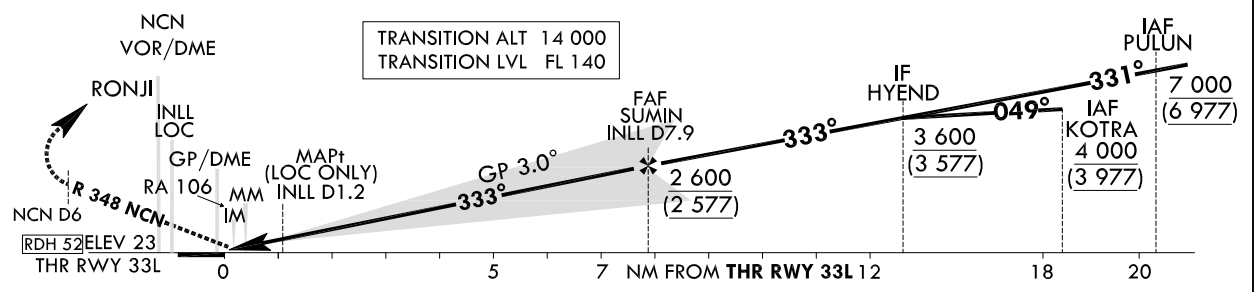
SEOUL APP 119.75  
119.1  
INCHEON TWR 118.2  
118.8

**SEOUL/Incheon Intl(RKSI)  
ILS or LOC RWY 33L  
CAT II & III**

Note : Approach under ICAO Flight Procedures.



RECOMMENDED PROFILE		DME INLL	7	6	5	4	3	2
Final Approach Gradient 5.35%, 325 ft/NM		ALT(HGT)	2 299 (2 276)	1 974 (1 951)	1 649 (1 626)	1 323 (1 300)	998 (975)	673 (650)



CATEGORY	DA(DH)/MDA(MDH)	A B C D DL				
		CAT-I (CG 2.5%)	FULL 455 (432)			1 300 m
	ALS INOP			2 000 m		
CAT-I (CG 4.0%)	FULL 223 (200)			RVR 550 m, VIS 800 m		
	ALS INOP			1 200 m		
LOC	FULL 430 (407)			1 200 m		
	ALS INOP			1 900 m		
CAT II	123(100)		300 m		300 m <sup>1)</sup> /350 m	
CAT IIIa	-			175 m		
CAT IIIb	-			75 m <sup>2)</sup> /125 m		

**MISSED APPROACH**  
Climb to 500 ft on RWY heading then turn RIGHT to intercept and follow R 348 NCN to 6 DME, continue climb to 4 000 ft LEFT turn direct to RONJI.  
Hold as published.

**NOTE**  
1. Missed approach turn limited to 210 kt IAS maximum.  
2. Missed approach minimum climb gradient of 2.5% to 4 000 ft(DH 432), 4% to 2 000 ft(DH 200 or 100).

\* Timing Not authorized for defining MAPt.  
\* Circling Not authorized.

1) For CAT D/DL aeroplane conducting an autoland.  
2) Aeroplane use Fail-operational system.

Change : Information of Missed Approach procedure.

SEOUL/Incheon Intl(RKSI)  
ILS or LOC RWY 33L  
CAT II & III

AERONAUTICAL DATA TABULATION

ILS/LOC Approach to RWY 33L from PULUN to HYEND(IF)	
Fix / Point	Coordinates
PULUN(IAF)	37°10'22.2" N 126°42'55.7" E
HYEND(IF)	37°16'41.2" N 126°37'01.0" E

ILS/LOC Approach to RWY 33L from KOTRA to HYEND(IF)	
Fix / Point	Coordinates
KOTRA(IAF)	37°12'21.3" N 126°32'17.4" E
HYEND(IF)	37°16'41.2" N 126°37'01.0" E

ILS/LOC Approach to RWY 33L from HYEND(IF) to MAHF	
Fix / Point	Coordinates
SUMIN(FAF) BRG 332.69°/7.92 NM INLL	37°20'55.1" N 126°33'16.4" E
D1.2 INLL(MAPt) (LOC ONLY) BRG 332.69°/1.20 NM INLL	37°26'24.4" N 126°28'24.3" E
NCN VOR/DME	37°29'41" N 126°25'49" E
THR RWY 33L	37°27'15" N 126°27'39" E
INLL DME	37°27'25" N 126°27'36" E
Climb to 500 ft HDG 333	-
D6 NCN R 348/6 DME NCN	-
RONJI BRG 267°/10 NM NCN	37°27'47" N 126°13'29" E

Change : Information of Fix/Point name and coordinates.

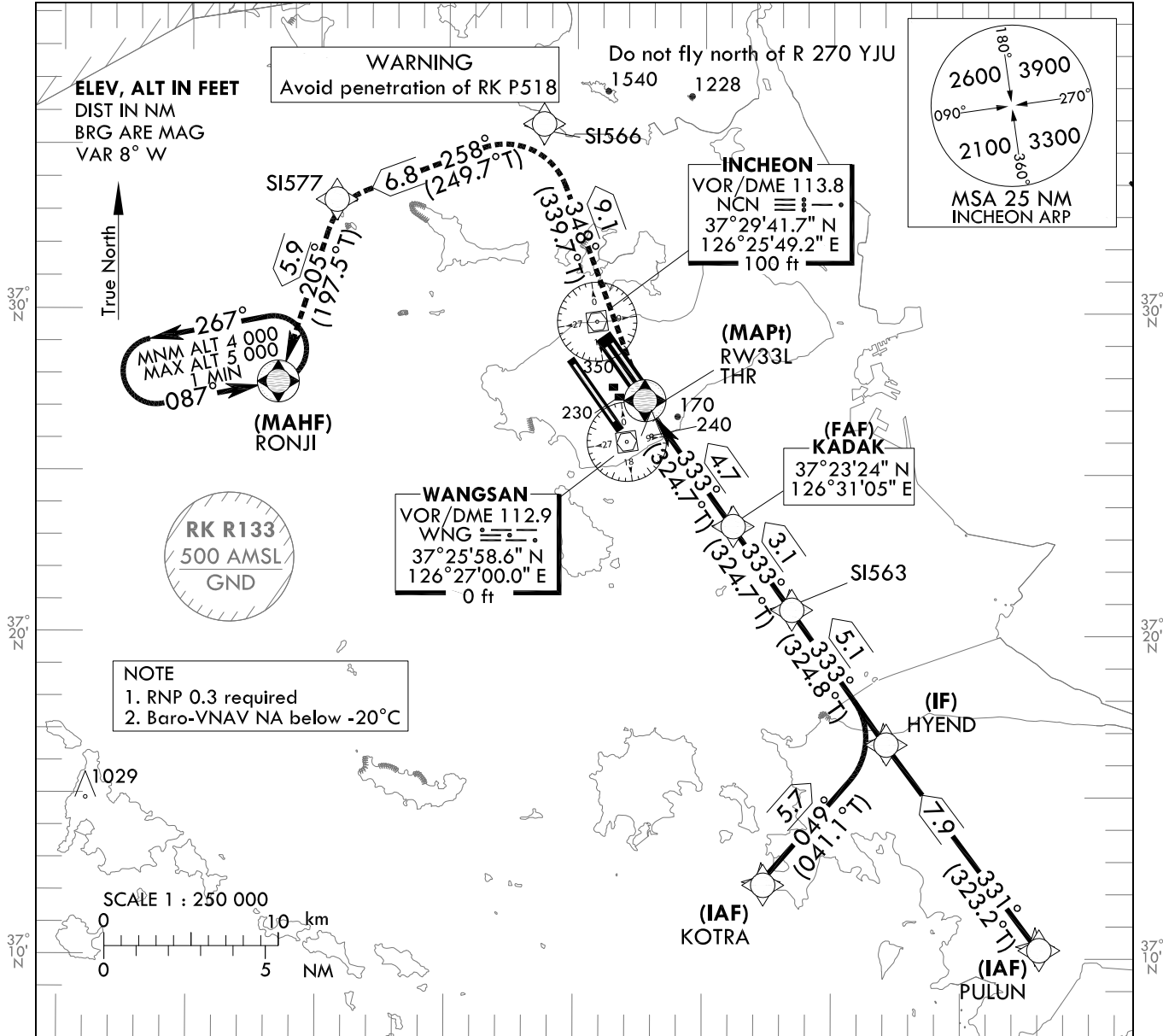
**INSTRUMENT  
APPROACH  
CHART - ICAO**

**AERODROME ELEV 23 ft**  
HEIGHTS RELATED TO  
THR RWY 33L - ELEV 23 ft

SEOUL APP 119.75  
119.1  
INCHEON TWR 118.2  
118.8

**SEOUL/Incheon Intl(RKSI)  
RNAV(GNSS)  
RWY 33L**

Note : Approach under ICAO Flight Procedures. 126°20' E

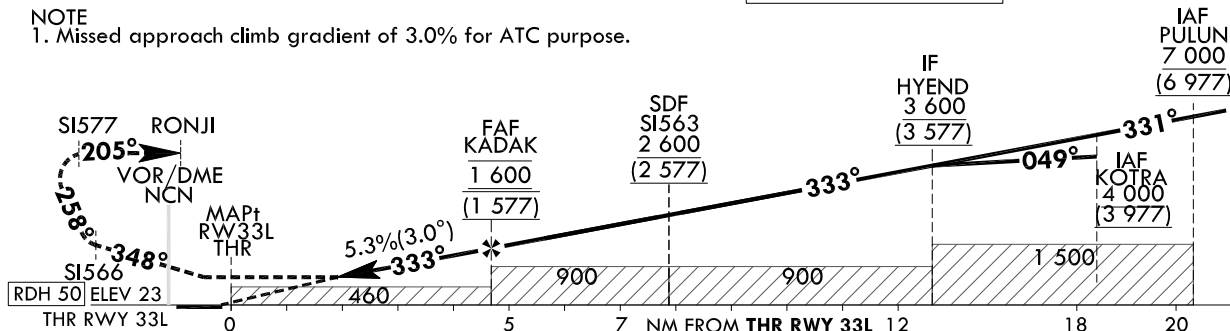


**MISSED APPROACH**

Climb to 4 000 ft. Track to SI566, SI577 and RONJI. Hold as published.

TRANSITION ALT 14 000  
TRANSITION LVL FL 140

NOTE  
1. Missed approach climb gradient of 3.0% for ATC purpose.



CATEGORY		MDA(H)/DA(H)	A	B	C	D	Knots					
LNAV	FULL	510 (487)		1 500 m			Rate of descent V/V fpm	60	90	120	150	180
	ALS INOP			2 300 m				318	478	637	796	955
LNAV/VNAV	FULL	430 (407)		1 200 m			* Timing Not authorized for defining MAPt. * Circling Not authorized.					
	ALS INOP			1 900 m								

Change : Minima.

SEOUL/Incheon Intl(RKSI)  
RNAV(GNSS)  
RWY 33L

AERONAUTICAL DATA TABULATION

Instrument Approach Procedure Coding Tables

RNAV(GNSS) RWY 33L - via PULLUN to HYEND(IF)

Serial Number	Path Descriptor	Waypoint Identifier	Fly-Over Course/Track over °M(°T)	Distance (NM)	Turn direction	Altitude (ft)	Speed (kt)	Coordinates	VPA/TCH	Navigation specification	Remarks
001	IF	PULLUN	-	-	-	+7 000	-	371022.2 N 1264255.7 E (R 153 NCN/D24, R 149 WNG/D20)	-	RNP APCH	IAF
002	TF	HYEND	331 (323.2)	7.9	-	+3 600	-	371641.2 N 1263701.0 E (R 153 NCN/D16, R 147 WNG/D12)	-	RNP APCH	IF

RNAV(GNSS) RWY 33L - via KOTRA to HYEND(IF)

Serial Number	Path Descriptor	Waypoint Identifier	Fly-Over Course/Track over °M(°T)	Distance (NM)	Turn direction	Altitude (ft)	Speed (kt)	Coordinates	VPA/TCH	Navigation specification	Remarks
001	IF	KOTRA	-	-	-	+4 000	-	371221.3 N 1263217.4 E (R 171 NCN/D18, R 171 WNG/D14)	-	RNP APCH	IAF
002	TF	HYEND	049 (041.1)	5.7	-	+3 600	-	371641.2 N 1263701.0 E (R 153 NCN/D16, R 147 WNG/D12)	-	RNP APCH	IF

RNAV(GNSS) RWY 33L - via HYEND(IF) to MAHF

Serial Number	Path Descriptor	Waypoint Identifier	Fly-Over Course/Track over °M(°T)	Distance (NM)	Turn direction	Altitude (ft)	Speed (kt)	Coordinates	VPA/TCH	Navigation specification	Remarks
002	TF	HYEND	-	-	-	+3 600	-	371641.2 N 1263701.0 E (R 153 NCN/D16, R 147 WNG/D12)	-	RNP APCH	IF
003	TF	S1563	333 (324.8)	5.1	-	+2 600	-	372049.5 N 1263321.4 E (R 154 NCN/D11, R 143 WNG/D7)	-	RNP APCH	SDF
004	TF	KADAK	333 (324.7)	3.1	-	@1 600	-	372323.8 N 1263104.6 E (R 154 NCN/D8, R 136 WNG/D4)	-	RNP APCH	FAF
005	TF	RW33L	333 (324.7)	4.7	-	+510	-	372715.2 N 1262739.1 E (R 157 NCN/D3, R 030 WNG/D1)	-3.01/50	RNP APCH	MAPt
006	TF	S1566	348 (339.7)	9.1	-	-	-	373545.5 N 1262342.2 E (R 352 NCN/D6, R 353 WNG/D10)	-	RNP APCH	-
007	TF	S1577	258 (249.7)	6.8	-	-	-	373323.8 N 1261542.3 E (R 303 NCN/D9, R 317 WNG/D12)	-	RNP APCH	-
008	TF	RONJI	205 (197.5)	5.9	-	+4 000	-	372747.0 N 1261329.0 E (R 267 NCN/D10, R 288 WNG/D11)	-	RNP APCH	-
009	HM	RONJI	087 (078.9)	-	L	-5 000 +4 000	-	372747.0 N 1261329.0 E (R 267 NCN/D10, R 288 WNG/D11)	-	RNP APCH	1 min (Outbound timing)

**INSTRUMENT  
APPROACH  
CHART - ICAO**

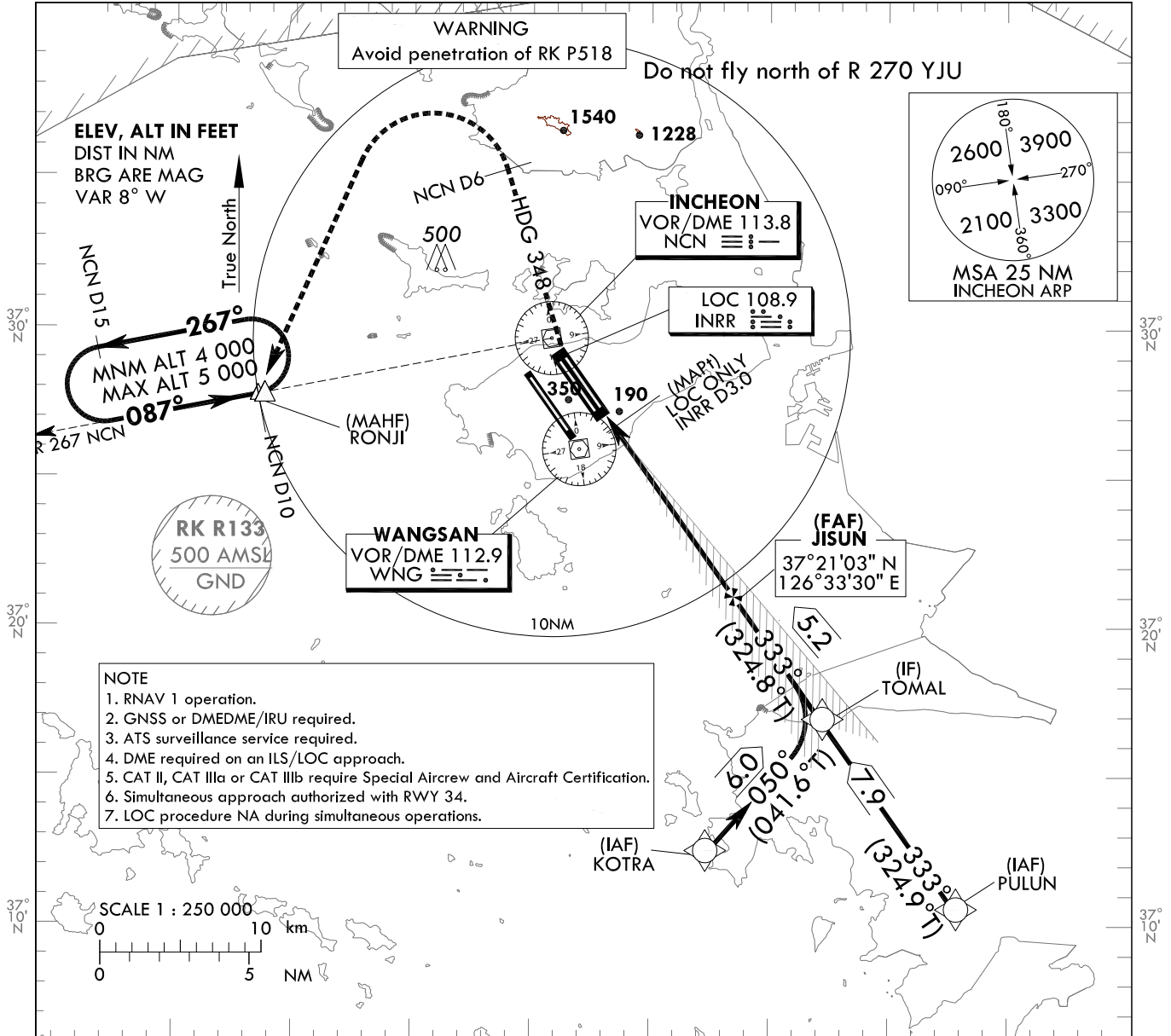
**AERODROME ELEV 23 ft**  
HEIGHTS RELATED TO  
THR RWY 33R - ELEV 23 ft

SEOUL APP 119.75  
119.1  
INCHEON TWR 118.2  
118.8

**SEOUL/Incheon Intl(RKSI)  
ILS or LOC RWY 33R  
CAT II & III**

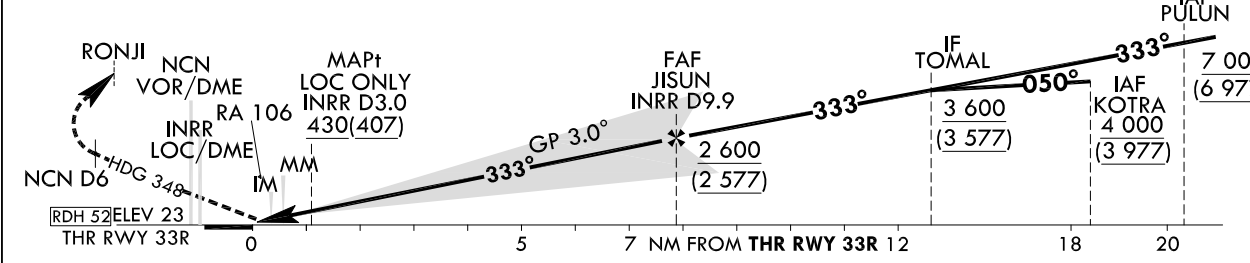
Note : Approach under ICAO Flight Procedures. 126°20' E

126°40' E



**NOTE**  
1. RNAV 1 operation.  
2. GNSS or DMEDME/IRU required.  
3. ATS surveillance service required.  
4. DME required on an ILS/LOC approach.  
5. CAT II, CAT IIIa or CAT IIIb require Special Aircrew and Aircraft Certification.  
6. Simultaneous approach authorized with RWY 34.  
7. LOC procedure NA during simultaneous operations.

RECOMMENDED PROFILE	DME INRR	9	8	7	6	5	4	TRANSITION ALT	14 000
Final Approach Gradient 5.24 %, 318 ft/NM	ALT(HGTT)	2 289 (2 266)	1 959 (1 936)	1 631 (1 608)	1 304 (1 281)	980 (957)	657 (634)	TRANSITION LVL	FL 140



CATEGORY	DA(DH)/MDA(MDH)	A					B					C					D					DL					
Straight-in	CAT-I (CG 2.5%)	FULL	461 (438)					2 000 m					1 300 m														
		ALS INOP	223 (200)					RVR 550 m, VIS 800 m					1 200 m														
	CAT-I (CG 4.0%)	FULL	430 (407)					1 900 m					1 200 m														
		ALS INOP	123(100)					300 m					300 m <sup>1)</sup> /350 m														
	CAT II		-					175 m																			
	CAT IIIa		-					75 m <sup>2)</sup> /125 m																			

**MISSED APPROACH**  
Climb to 500 ft on RWY heading then turn RIGHT on Heading 348° to NCN 6DME, continue climb to 4 000 ft LEFT turn direct to RONJI. Hold as published.  
NOTE  
1. Missed approach turn limited to 210 KIAS maximum.  
2. Missed approach minimum climb gradient of 2.5% to 4 000 ft (DH 438), 4% to 2 000 ft (DH 200 or 100).  
\* Timing Not authorized for defining MAPt.  
\* Circling Not authorized.

1) For CAT D/DL aeroplane conducting an autoland.  
2) Aeroplane use Fail-operational system.

Change : Minima.

SEOUL/Incheon Intl(RKSI)  
ILS or LOC RWY 33R  
CAT II & III

AERONAUTICAL DATA TABULATION

ILS/LOC Approach to RWY 33R from PULUN to TOMAL(IF)		
Fix / Point	Coordinates	
PULUN(IAF)	37°10'22.2" N	126°42'55.7" E
TOMAL(IF)	BRG 332.73°/7.90NM	37°16'49.0" N 126°37'14.8" E

ILS/LOC Approach to RWY 33R from KOTRA to TOMAL(IF)		
Fix / Point	Coordinates	
KOTRA(IAF)	37°12'21.3" N	126°32'17.4" E
TOMAL(IF)	BRG 049.47°/6.00NM	37°16'49.0" N 126°37'14.8" E

ILS/LOC Approach to RWY 33R from TOMAL(IF) to MAHF		
Fix / Point	Coordinates	
JISUN(FAF)	BRG 332.59°/9.90NM INRR	37°21'02.8" N 126°33'30.1" E
D3.0 INRR(MAPt LOC ONLY)	BRG 332.59°/3.00NM INRR	37°26'43.0" N 126°28'28.4" E
THR RWY33R		37°27'22.97" N 126°27'52.82" E
INRR DME		37°29'08.5" N 126°26'15.1" E
NCN VOR/DME		37°29'41.7" N 126°25'49.2" E
Climb to 500 ft	HDG 333	-
D6 NCN		-
RONJI	BRG 211.55°/10.00NM NCN	37°27'47.0" N 126°13'29.0" E



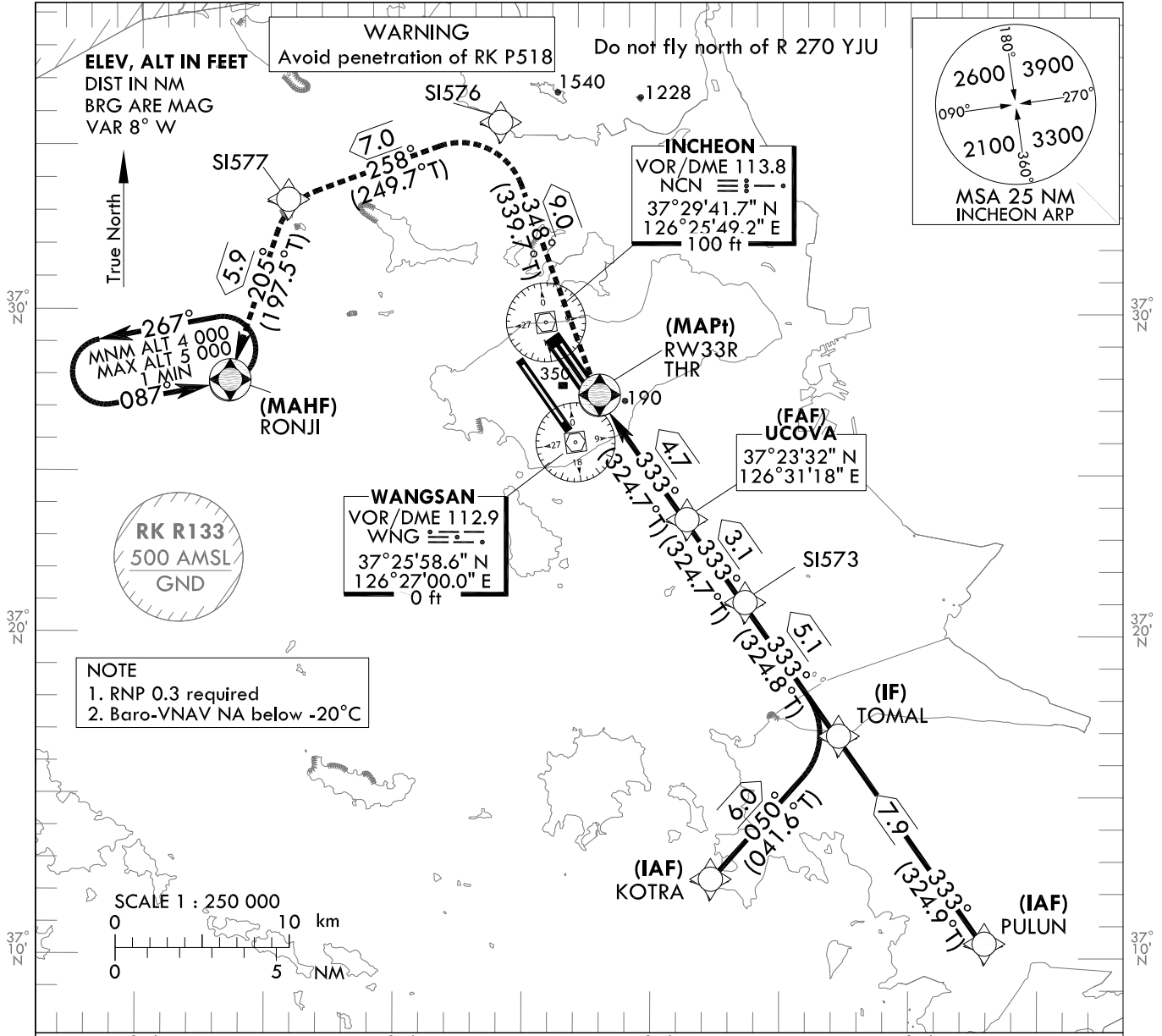
**INSTRUMENT  
APPROACH  
CHART - ICAO**

**AERODROME ELEV 23 ft**  
HEIGHTS RELATED TO  
THR RWY 33R - ELEV 23 ft

SEOUL APP 119.75  
119.1  
INCHEON TWR 118.2  
118.8

**SEOUL/Incheon Intl(RKSI)**  
**RNAV(GNSS)**  
**RWY 33R**

Note : Approach under ICAO Flight Procedures.



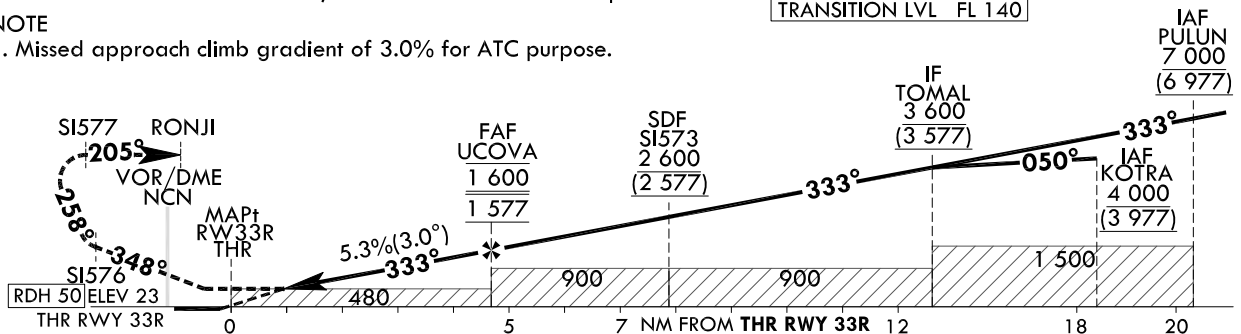
**MISSED APPROACH**

Climb to 4 000ft. Track to SI576, SI577 and RONJI. Hold as published.

**NOTE**

1. Missed approach climb gradient of 3.0% for ATC purpose.

TRANSITION ALT 14 000  
TRANSITION LVL FL 140



CATEGORY		MDA(H)/DA(H)	A	B	C	D	Knots					
LNAV	FULL	480 (457)		1 400 m			Rate of descent V/V fpm	60	90	120	150	180
	ALS INOP			2 100 m				318	478	637	796	955
LNAV/VNAV	FULL	430 (407)		1 200 m			* Timing Not authorized for defining MAPt. * Circling Not authorized.					
	ALS INOP			1 900 m								

Change : Minima.

SEOUL/Incheon Intl(RKSI)  
RNAV(GNSS)  
RWY 33R

AERONAUTICAL DATA TABULATION

Instrument Approach Procedure Coding Tables

RNAV(GNSS) RWY 33R - via PULUN to TOMAL(IF)

Serial Number	Path Descriptor	Waypoint Identifier	Fly-over	Course/Track °M(°T)	Distance (NM)	Turn direction	Altitude (ft)	Speed (kt)	Coordinates	VPA/TCH	Navigation specification	Remarks
001	IF	PULUN	-	-	-	-	+7 000	-	371022.2 N 1264255.7 E (R 153 NCN/D24, R 149 WNG/D20)	-	RNP APCH	IAF
002	TF	TOMAL	-	333 (324.9)	7.9	-	+3 600	-	371649.0 N 1263714.8 E (R 153 NCN/D16, R 146 WNG/D12)	-	RNP APCH	IF

RNAV(GNSS) RWY 33R - via KOTRA to TOMAL(IF)

Serial Number	Path Descriptor	Waypoint Identifier	Fly-over	Course/Track °M(°T)	Distance (NM)	Turn direction	Altitude (ft)	Speed (kt)	Coordinates	VPA/TCH	Navigation specification	Remarks
001	IF	KOTRA	-	-	-	-	+4 000	-	371221.3 N 1263217.4 E (R 171 NCN/D18, R 171 WNG/D14)	-	RNP APCH	IAF
002	TF	TOMAL	-	050 (041.6)	6.0	-	+3 600	-	371649.0 N 1263714.8 E (R 153 NCN/D16, R 146 WNG/D12)	-	RNP APCH	IF

RNAV(GNSS) RWY 33R - via TOMAL(IF) to MAHF

Serial Number	Path Descriptor	Waypoint Identifier	Fly-over	Course/Track °M(°T)	Distance (NM)	Turn direction	Altitude (ft)	Speed (kt)	Coordinates	VPA/TCH	Navigation specification	Remarks
002	TF	TOMAL	-	-	-	-	+3 600	-	371649.0 N 1263714.8 E (R 153 NCN/D16, R 146 WNG/D12)	-	RNP APCH	IF
003	TF	S1573	-	333 (324.8)	5.1	-	+2 600	-	372057.2 N 1263335.1 E (R 153 NCN/D11, R 142 WNG/D7)	-	RNP APCH	SDF
004	TF	UCOVA	-	333 (324.7)	3.1	-	@1 600	-	372331.5 N 1263118.4 E (R 153 NCN/D8, R 133 WNG/D4)	-	RNP APCH	FAF
005	TF	RW33R	Y	333 (324.7)	4.7	-	+480	-	372723.0 N 1262752.8 E (R 153 NCN/D3, R 034 WNG/D2)	-3.01/50	RNP APCH	MAPt
006	TF	S1576	-	348 (339.7)	9.0	-	-	-	373550.0 N 1262357.5 E (R 354 NCN/D6, R 354 WNG/D10)	-	RNP APCH	-
007	TF	S1577	-	258 (249.7)	7.0	-	-	-	373323.8 N 1261542.3 E (R 303 NCN/D9, R 317 WNG/D12)	-	RNP APCH	-
008	TF	RONJI	Y	205 (197.5)	5.9	-	+4 000	-	372747.0 N 1261329.0 E (R 267 NCN/D10, R 288 WNG/D11)	-	RNP APCH	-
009	HM	RONJI	Y	087 (078.9)	-	L	-5 000 +4 000	-	372747.0 N 1261329.0 E (R 267 NCN/D10, R 288 WNG/D11)	-	RNP APCH	1 min (Outbound timing)

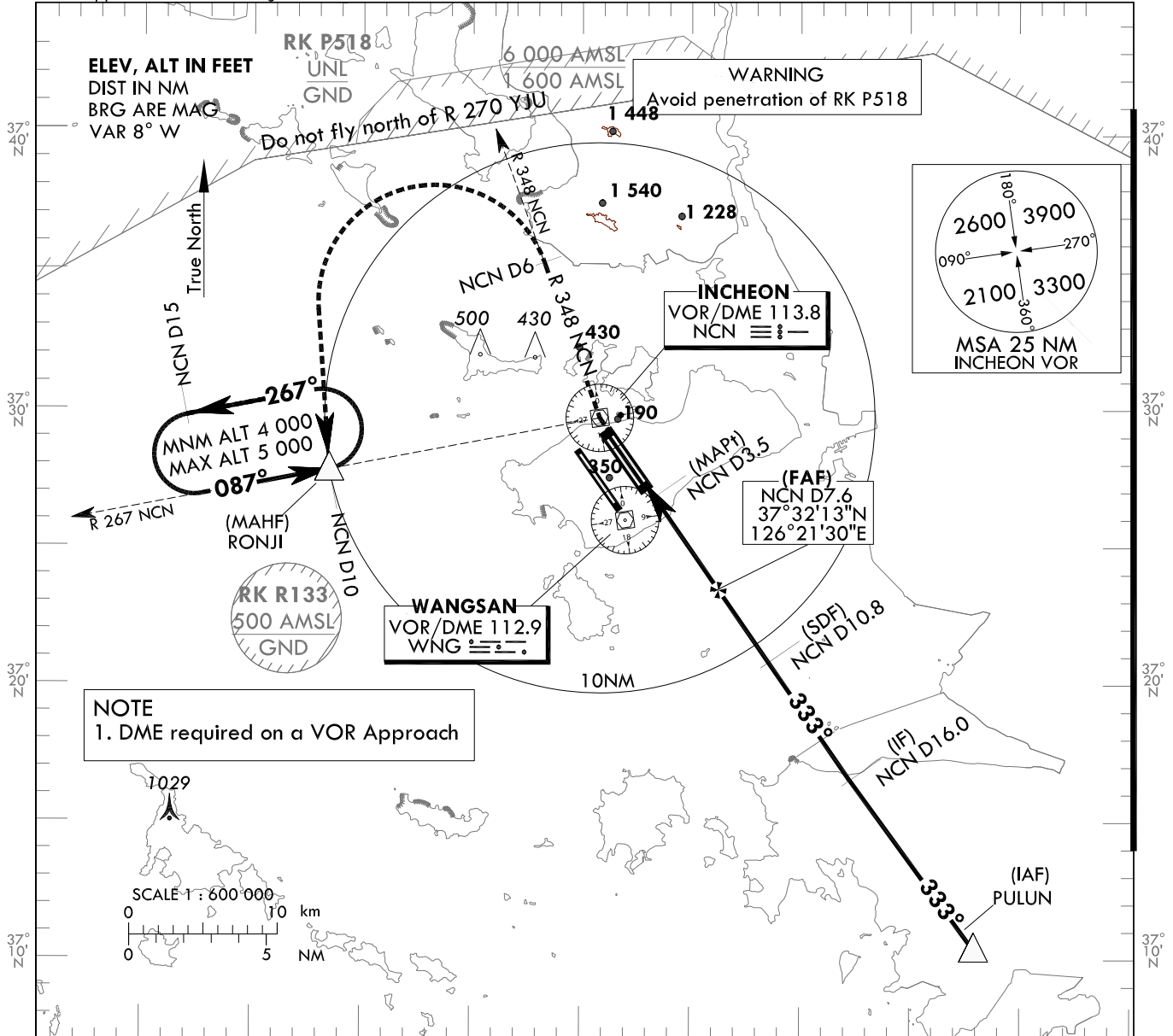
**INSTRUMENT  
APPROACH  
CHART - ICAO**

**AERODROME ELEV 23 ft**  
HEIGHTS RELATED TO  
THR RWY 33R - ELEV 23 ft

SEOUL APP 119.75  
119.1  
INCHEON TWR 118.2  
118.8

**SEOUL/Incheon Intl(RKSI)  
VOR  
RWY 33R**

Note : Approach under ICAO Flight Procedures.



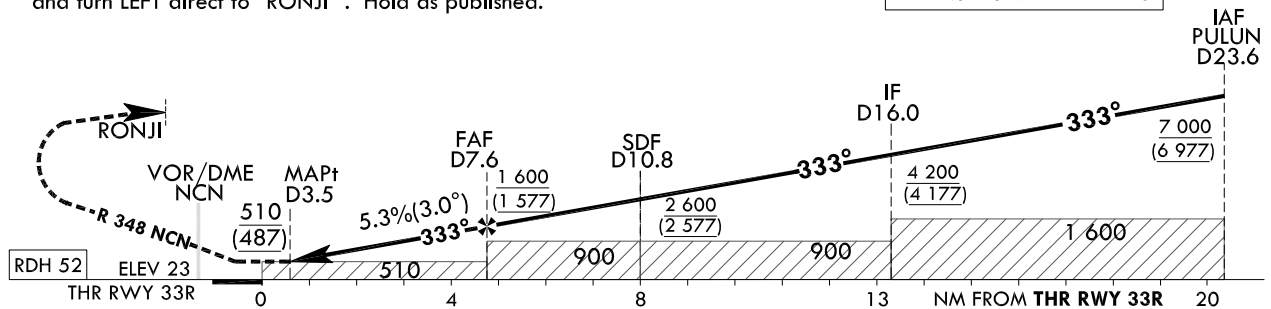
**NOTE**  
1. DME required on a VOR Approach

RECOMMENDED PROFILE	DME KIP	7	6	5	4
Final Approach Gradient 5.3%(319.9 ft/NM)	ALT(HGT)	1 408(1 385)	1 088(1 065)	768(746)	449(426)

**MISSED APPROACH**

Climb to 4 000 ft via "NCN" VOR then RIGHT turn on R 348 NCN to 6 DME and turn LEFT direct to "RONJI". Hold as published.

TRANSITION ALT 14 000  
TRANSITION LVL FL 140



CATEGORY		MDA(MDH)	A	B	C	D	Knots							
Straight-in	FULL	510 (487)		1 600 m				Rate of descent	V/V fpm	320	480	640	800	960
	ALS INOP			2 300 m					* Timing Not authorized for defining MAPt. * Circling Not authorized.					

Change : Obstacle, Weather minima, DME NCN

SEOUL/Incheon Intl(RKSI)

VOR

RWY 33R

AERONAUTICAL DATA TABULATION

VOR Approach to RWY 33R from PULUN			
Fix / Point		Coordinates	
PULUN(IAF)		37°10'22.2" N	126°42'55.7" E
D16 NCN(IF)	BRG 332.56°/7.64NM	37°16'35.5" N	126°37'22.8" E
D10.8 NCN(SDF)	BRG 333.00°/10.80NM NCN	37°20'51.0" N	126°33'37.9" E
D7.6 NCN(FAF)	BRG 333.00°/7.60NM NCN	37°23'28.2" N	126°31'19.3" E
D3.5 NCN(MAPt)	BRG 333.00°/3.50NM NCN	37°26'49.6" N	126°28'21.5" E
THR RWY33R	Final approach descent angle 3°	37°27'22.97" N	126°27'52.82" E
NCN VOR/DME		37°29'41.7" N	126°25'49.2" E
D6 NCN	R 348 NCN/6.00NM NCN	37°35'19.7" N	126°23'12.9" E
RONJI	BRG 183.87°/10.00NM NCN	37°27'47.0" N	126°13'29.0" E

Change : Information of DATA TABULATION

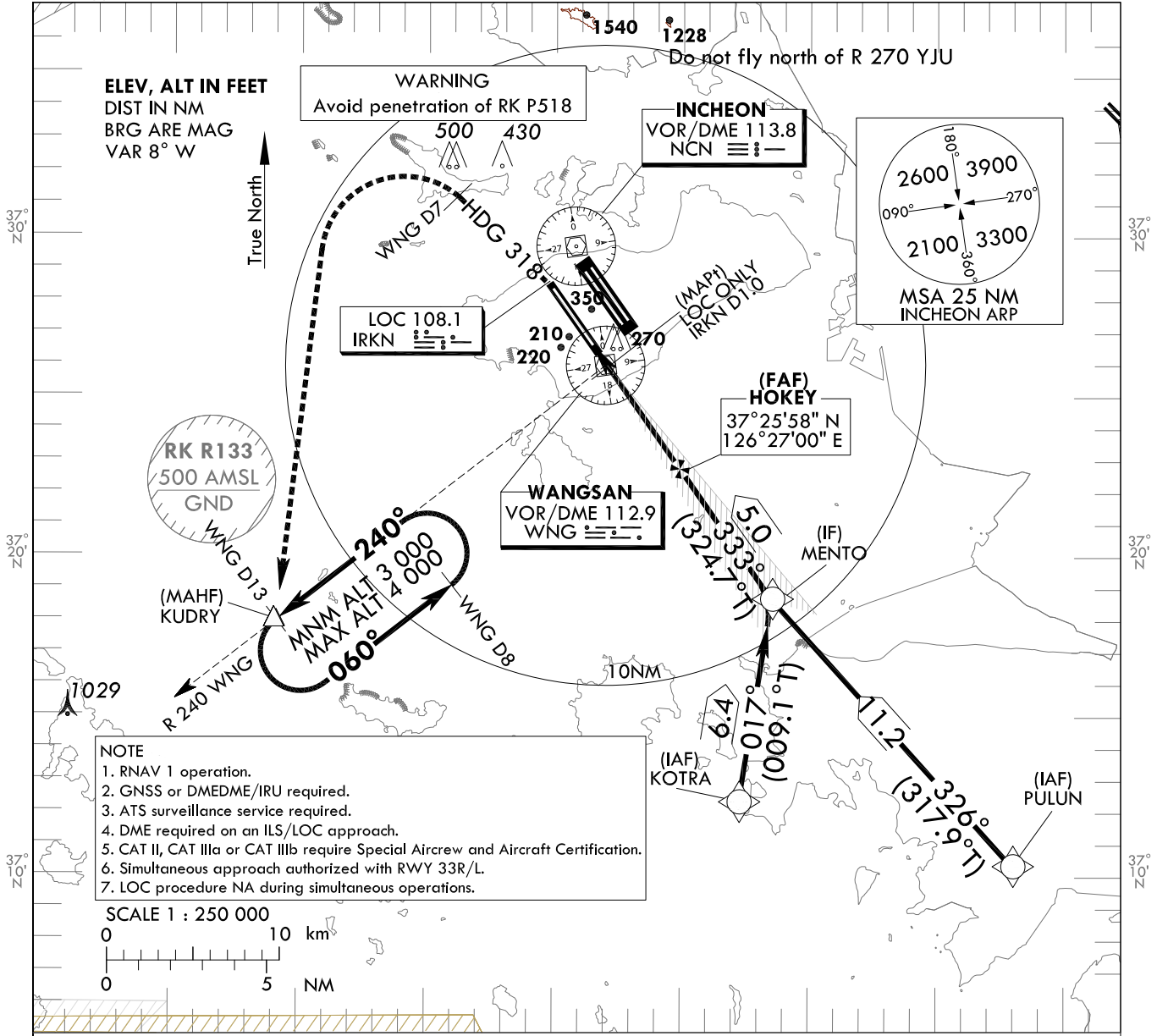
**INSTRUMENT APPROACH CHART - ICAO**

**AERODROME ELEV 23 ft**  
HEIGHTS RELATED TO THR RWY 34 - ELEV 23 ft

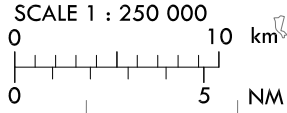
SEOUL APP 119.75  
119.1  
INCHEON TWR 118.2  
118.8

**SEOUL/Incheon Intl(RKSI) ILS or LOC RWY 34**  
CAT II & III

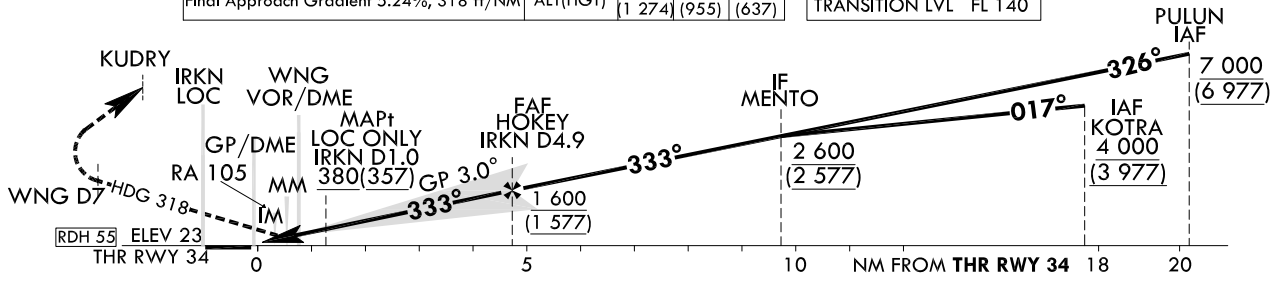
Note : Approach under ICAO Flight Procedures.



- NOTE**
1. RNAV 1 operation.
  2. GNSS or DMEDME/IRU required.
  3. ATS surveillance service required.
  4. DME required on an ILS/LOC approach.
  5. CAT II, CAT IIIa or CAT IIIb require Special Aircrew and Aircraft Certification.
  6. Simultaneous approach authorized with RWY 33R/L.
  7. LOC procedure NA during simultaneous operations.



RECOMMENDED PROFILE		DME IRKN	4	3	2	TRANSITION ALT 14 000 TRANSITION LVL FL 140
Final Approach Gradient 5.24%, 318 ft/NM		ALT(HGT)	1 297 (1 274)	978 (935)	660 (637)	



CATEGORY	DA(DH)/MDA(MDH)	A					B					C					D					DL							
		RVR					VIS					RVR					VIS					RVR					VIS		
Straight-in	CAT-I (CG 2.5%)	FULL	251 (228)					RVR 550 m, VIS 800 m					1 200 m					RVR 550 m, VIS 800 m					1 200 m						
	CAT-I (CG 3.0%)	FULL	223 (200)					RVR 550 m, VIS 800 m					1 200 m					RVR 550 m, VIS 800 m					1 200 m						
		ALS INOP	-					-					-					-					-						
		GP INOP	380 (357)					900 m					1 600 m					300 m <sup>1)</sup> /350 m					-						
		GP & ALS INOP	-					-					-					-					-						
		CAT II	123(100)	300 m					300 m <sup>1)</sup> /350 m					-					-										
	CAT IIIa	-	-					175 m					-					-											
	CAT IIIb	-	-					75 m <sup>2)</sup> /125 m					-					-											

**MISSED APPROACH**  
Climb to 500 ft on RWY Heading then turn LEFT on Heading 318° to WNG D7, continue climb to 3 000 ft LEFT turn direct to KUDRY. Hold as published.

**NOTE**

1. Missed approach turn limited to 210 KIAS maximum.
2. Missed approach minimum climb gradient of 2.5% to 3 000 ft(DH 228), 3% to 1 000 ft(DH 200 or 100).

\* Timing Not authorized for defining MAPt.  
\* Circling Not authorized.

1) For CAT D/DL aeroplane conducting an autoland.  
2) Aeroplane use Fail-operational system.

SEOUL/Incheon Intl(RKSI)  
ILS or LOC RWY 34  
CAT II & III

AERONAUTICAL DATA TABULATION

ILS/LOC Approach to RWY 34 from PULUN to MENTO(IF)		
Fix / Point	Coordinates	
PULUN(IAF)	37°10'22.2" N	126°42'55.7" E
MENTO(IF)	BRG 325.81°/11.20NM	37°18'39.4" N 126°33'33.4" E

ILS/LOC Approach to RWY 34 from KOTRA to MENTO(IF)		
Fix / Point	Coordinates	
KOTRA(IAF)	37°12'21.3" N	126°32'17.4" E
MENTO(IF)	BRG 017.00°/6.40NM	37°18'39.4" N 126°33'33.4" E

ILS/LOC Approach to RWY 34 from MENTO(IF) to MAHF		
Fix / Point	Coordinates	
HOKEY(FAF)	BRG 332.58°/4.90NM IRKN	37°22'45.3" N 126°29'55.4" E
D1.0 IRKN(MAPt) (LOC ONLY)	BRG 332.58°/1.00NM IRKN	37°25'55.8" N 126°27'06.2" E
WNG VOR/DME		37°25'58.6" N 126°27'00.0" E
THR RWY34		37°26'36.29" N 126°26'30.21" E
IRKN DME		37°26'42.5" N 126°26'18.8" E
Climb to 500 ft	HDG 333	-
D7 WNG		-
KUDRY	BRG 194.59°/13.00NM WNG	37°17'58.7" N 126°14'09.0" E

Change : Fix coordinates(WNG).

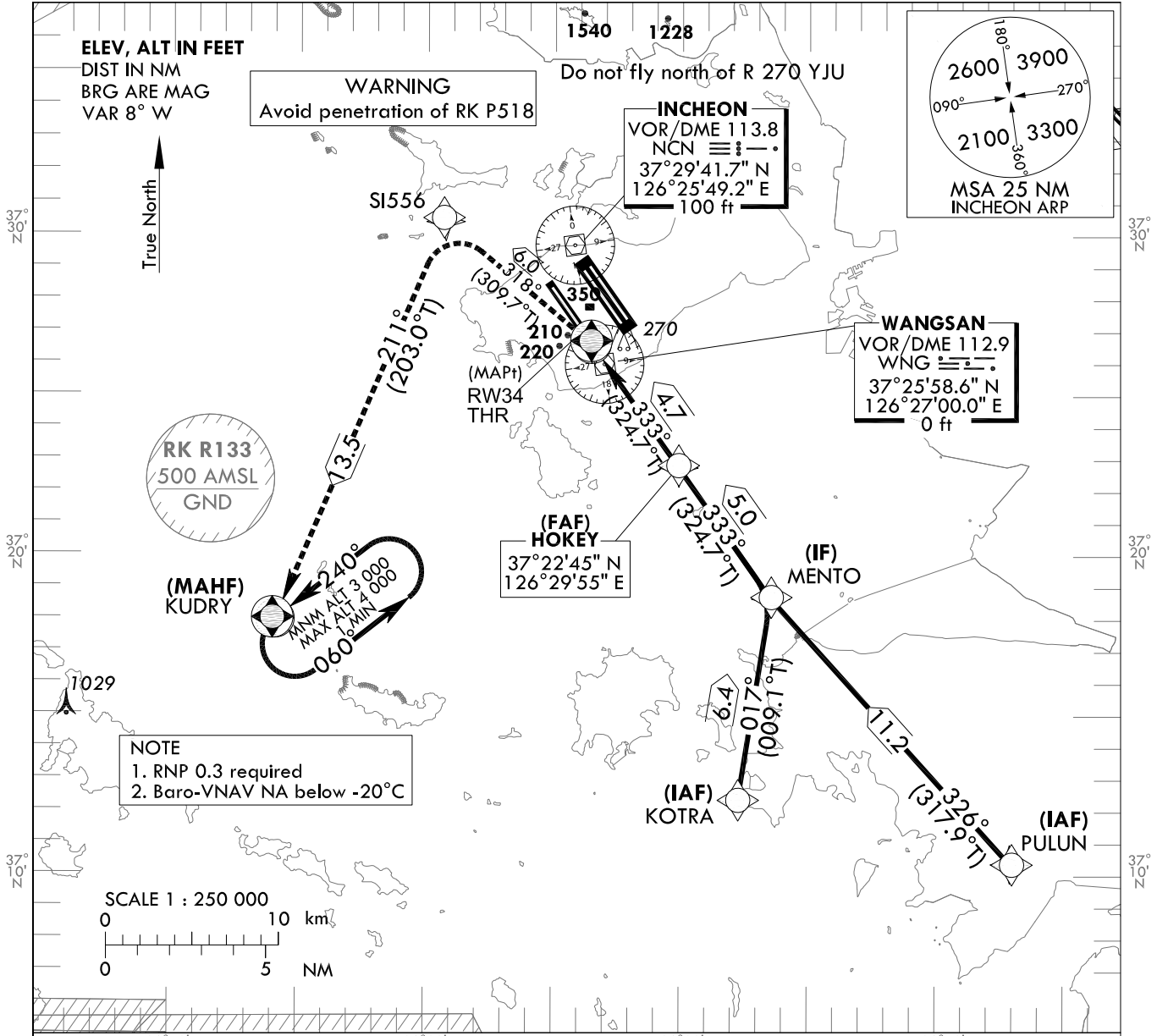
**INSTRUMENT  
APPROACH  
CHART - ICAO**

**AERODROME ELEV 23 ft**  
HEIGHTS RELATED TO  
THR RWY 34 - ELEV 23 ft

SEOUL APP 119.75  
119.1  
INCHEON TWR 118.8  
118.2

**SEOUL/Incheon Intl(RKSI)**  
**RNAV(GNSS)**  
**RWY 34**

Note : Approach under ICAO Flight Procedures.



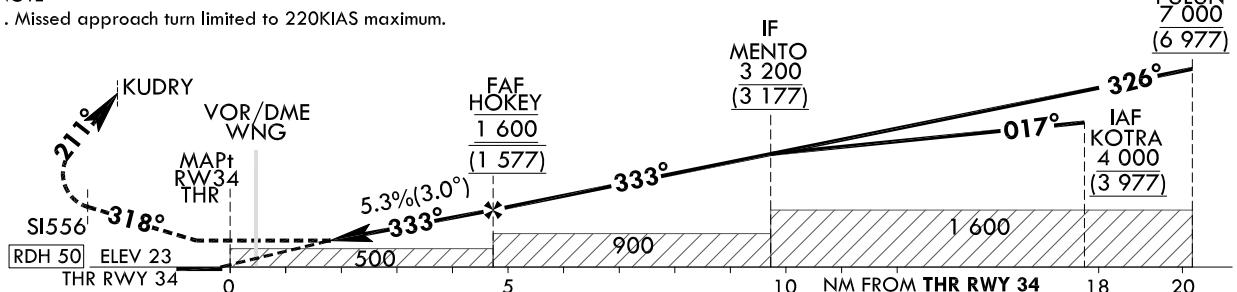
**MISSED APPROACH**

Climb to 3 000 ft. Track to SI556, KUDRY. Hold as published.

NOTE

1. Missed approach turn limited to 220KIAS maximum.

TRANSITION ALT 14 000  
TRANSITION LVL FL 140



CATEGORY		MDA(H)/DA(H)	A	B	C	D	Knots						
LNAV	FULL	510 (487)	1 500 m				Rate of descent	V/V fpm	318	478	637	796	955
	ALS INOP		2 300 m										
LNAV/VNAV	FULL	430 (407)	1 200 m				* Timing Not authorized for defining MAPt. * Circling Not authorized.						
	ALS INOP		1 900 m										

Change : Minima.

SEOUL/Incheon Intl(RKSI)  
RNAV(GNSS)  
RWY 34

AERONAUTICAL DATA TABULATION

Instrument Approach Procedure Coding Tables

RNAV(GNSS) RWY 34 - via PULLUN to MENTO(IF)

Serial Number	Path Descriptor	Waypoint Identifier	Fly-over	Course/Track °M(°T)	Distance (NM)	Turn direction	Altitude (ft)	Speed (kt)	Coordinates	VPA/TCH	Navigation specification	Remarks
001	IF	PULLUN	-	-	-	-	+7 000	-	371022.2 N 1264255.7 E (R 153 NCN/D24, R 149 WNG/D20)	-	RNP APCH	IAF
002	TF	MENTO	-	326 (317.9)	11.2	-	+3 200	-	371839.4 N 1263333.4 E (R 159 NCN/D13, R 152 WNG/D9)	-	RNP APCH	IF

RNAV(GNSS) RWY 34 - via KOTRA to MENTO(IF)

Serial Number	Path Descriptor	Waypoint Identifier	Fly-over	Course/Track °M(°T)	Distance (NM)	Turn direction	Altitude (ft)	Speed (kt)	Coordinates	VPA/TCH	Navigation specification	Remarks
001	IF	KOTRA	-	-	-	-	+4 000	-	371221.3 N 1263217.4 E (R 171 NCN/D18, R 171 WNG/D14)	-	RNP APCH	IAF
002	TF	MENTO	-	017 (009.1)	6.4	-	+3 200	-	371839.4 N 1263333.4 E (R 159 NCN/D13, R 152 WNG/D9)	-	RNP APCH	IF

RNAV(GNSS) RWY 34 - via MENTO(IF) to MAHF

Serial Number	Path Descriptor	Waypoint Identifier	Fly-over	Course/Track °M(°T)	Distance (NM)	Turn direction	Altitude (ft)	Speed (kt)	Coordinates	VPA/TCH	Navigation specification	Remarks
002	TF	MENTO	-	-	-	-	+3 200	-	371839.4 N 1263333.4 E (R 159 NCN/D13, R 152 WNG/D9)	-	RNP APCH	IF
003	TF	HOKEY	-	333 (324.7)	5.0	-	@1 600	-	372245.3 N 1262955.4 E (R 163 NCN/D8, R 152 WNG/D4)	-	RNP APCH	FAF
004	TF	RW34	Y	333 (324.7)	4.7	-	+510	-	372636.3 N 1262630.2 E (R 178 NCN/D3, R 336 WNG/D1)	-3.01/50	RNP APCH	MAPT
005	TF	SI556	-	318 (309.7)	6.0	-	-	-220	373024.6 N 1262044.8 E (R 288 NCN/D4, R 320 NCN/D7)	-	RNP APCH	-
006	TF	KUDRY	Y	211 (203.0)	13.5	-	+3 000	-220	371758.7 N 1261409.0 E (R 226 NCN/D15, R 240 WNG/D13)	-	RNP APCH	-
007	HM	KUDRY	Y	240 (232.0)	-	L	-4 000 +3 000	-	371758.7 N 1261409.0 E (R 226 NCN/D15, R 240 WNG/D13)	-	RNP APCH	1 min (Outbound timing)